

Becoming who we
are



Mount Maunganui Intermediate

Welcome

Mission Statement *“Becoming who we are”*

Mount maunganui Intermediate is a place where young minds grow and individual interests, passions and strengths are discovered.

Our students develop a sense of their true worth and forge new relationships with their peers, whanau, teachers and their community. Our school is nurturing, as emerging adolescents are encouraged to try new things, make mistakes, learn and discover themselves.



Our Principal

Naumai haere mai ki Te Kura Takawaenga o Mauao.
A warm welcome to Mount Maunganui Intermediate
School.

We are a large, welcoming intermediate school which prides itself on excellent educational opportunities, both in and out of the classroom, for all of our students.

Intermediate schools are special places which celebrate the unique opportunities and challenges of being an emerging adolescent. Mount Maunganui Intermediate is a safe, positive, inclusive school. We cater for 11-13 year olds and offer a myriad of opportunities for students to 'become who they are' in a high quality, safe, supportive learning environment.

We prioritise positive relationships to create a supportive, challenging and fun learning environment. This ensures the students feel secure and empowered as we work together on their physical, academic and social development.

At Mount Maunganui Intermediate, we have excellent teachers who work in partnership with parents and whanau to support students to make positive progress in their two years with us. We are a school that makes a difference and we are a school who cares about our students.

We look forward to welcoming you to Mount Maunganui Intermediate.

Kind regards

Whaea Melissa

Melissa Nelson

Tumuaki/Principal





Class Programme

You will be carefully placed in a composite Year 7 and 8, mixed ability class. You will have a caring, supportive teacher who will meet your individual learning needs. You will likely have the same teacher for the two years you are at MMI. This means that your teacher will know you and your whanau really well. At MMI, we believe that relationships are the key to academic success. So, if there needs to be a few changes to class composition, we will make them at the end of each school year, in consultation with teachers and whanau.



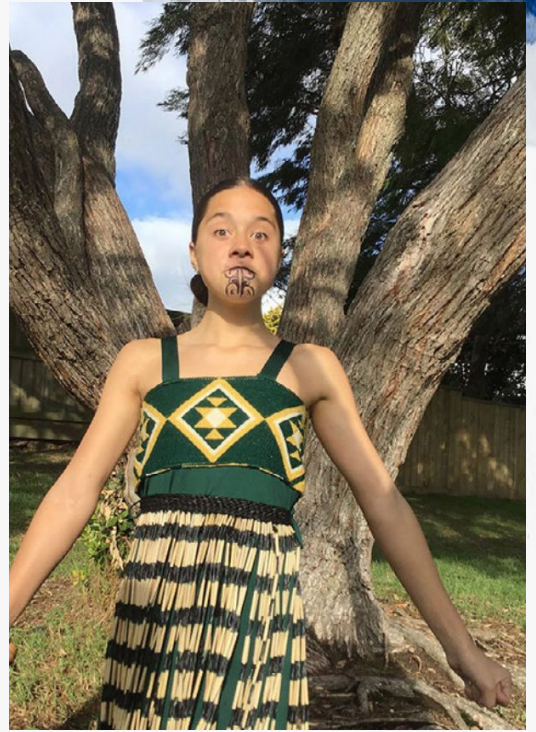
Class Programme

Whanau Class
Special Needs
Extension



Bilingual Programme

Manaakitanga is a core value in which we live and learn by. Our whanau units offer our students a place to belong and excel. Our programme is designed to extend our tamariki in their reading, writing and mathematics, whilst deepening their knowledge and skill in Te Reo Maori me ona tikanga. You do not need to have been in a bilingual unit in the past to be part of this kaupapa at Te Kura Takawaenga o Mauao. To join our class, you simply need to have a passion to learn Te Reo Maori and a commitment to the kaupapa of the class.



What's best for you as a learner?

“Tena koutou katoa, Ko Leila Broederlow toku ingoa. I am a year 8 in the Bilingual Whānau class at MMI. During my time here some of the opportunities I have had are leading the karakia and whaikorero in mihimihi, being involved and performing in Kapahaka and creating and learning mahi toi. Some of the experiences I have had are welcoming manuhiri into our kura with our powhiri/whakatau. The best experience has been learning and having Matua Tapuraka as a kaiako and also having friends that have turned into whānau. Ka whakakapi ahau i taku korero i te whakatauki nei Ko au ko koe ko koe ko au.” Leila Broederlow



Special Needs

Do you have special learning needs? Do you need some extra help to support you in your learning or behaviour? Many students choose to come to MMI because we work hard to provide a calm inclusive and learning-focused school environment.

What are some things that will help with your learning?

- English Language learning for speakers of other languages.
- Positive Behaviour for Learning
- Programmes and support for students with learning and or behaviour difficulties
- Restorative practices

Special Needs Coordinator

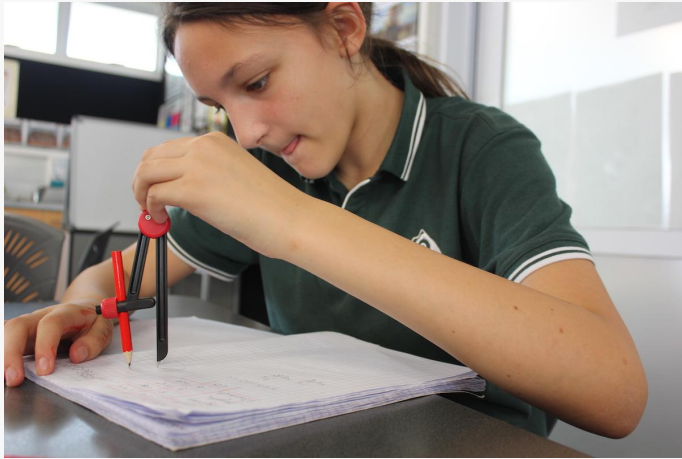
_Strong working partnerships with support agencies

-Counselling services available on site.





“MMI offers a huge range of curriculum opportunities. Whether it's sporting, writing, dancing, english or maths, there will always be something for you. All staff at MMI are very supportive towards everyone's strengths and learning abilities, and always encourage us to strive towards our learning goals. We are taught in a fun environment, which makes our learning more enjoyable. We always have fun, whether it's on the playground or in the classroom, and we can always get the work done.” Asha James



Literacy and Numeracy

You will be taught reading, writing and maths in groups. These may be groups based on ability, mixed groups or workshop based groups where students choose lessons that meet their learning goals. We expect all students to make a minimum of one year's progress, with learning being accelerated for students who are at risk of not meeting curriculum expectations.



Academic Opportunities

- Bay Maths
- Future Problem Solving
- ICAS Examinations
- Life Education Trust
- Literature Quiz
- Otago Problem Solving
- Primary Research Project
- Science Fair
- Speech
- Technology Challenge
- Technology Fair
- Young Innovator Awards
- Blues



Curriculum Opportunities

Literacy and Numeracy
Goal Setting
Integrated Curriculum
Academic
Kiwi Can Programme





Inquiry

Just like at primary school, teaching and learning is based upon the New Zealand Curriculum. Inquiry units or integrated units of work are collaboratively planned by teachers, with an emphasis on the key competencies and what you need to learn. We plan the big learning with input from students and the learning is designed to meet the needs of emerging adolescents.

Goal Setting

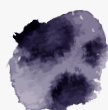
You will work with your teachers, regularly throughout the school year, to identify your strengths, next steps and learning goals in literacy, mathematics and other learning areas. These goals will be regularly revisited, with you being responsible for collecting evidence that you have achieved them. Your current goals will be shared with your whanau at learning conferences, twice, during the school year.

What do you need to Learn?



Kiwi Can Programme

This programme teaches you essential life skills and values such as resilience, respect, integrity and manners. All classes attend a Kiwi Can lesson once a week. Specially trained Kiwi Can leaders work in pairs, delivering high energy, interactive and most importantly, fun lessons. They are awesome role models to look up to.





"MMI offers a vast array of leadership opportunities, such as being a Head Student or a Class Councillor. These experiences help you to learn new skills and to develop your leadership ability. Part of the role is to attend weekly Student Council meetings where you represent your class, providing feedback and putting forward ideas for the school. As Head Students you are also called upon to speak at school assemblies and represent the school throughout the year in formal and informal settings. Head Students and Councillors also get to go on an amazing leadership camp, where you meet other leaders from various schools. MMI encourages us all to be positive role models and for everyone to 'give things a go'. With that in mind, there are also plenty of other great leadership opportunities to try at MMI such as Road Patroller, PE Monitor and Librarian, to name a few." Sam Cross



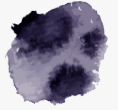
Student Leadership

Blues Opportunities

Blues

Blues are awarded for high achievement in sporting, cultural, academic and service endeavours at MMI. You can earn them for representing our school in many areas and/or for being a high achiever in an area, such as service to the school. Blues come in the form of a fabric strip that we encourage you to get sewn onto the sleeve of your school uniform polar fleece





Student Leadership

We believe that emerging adolescents are very capable of taking an active leadership role in our school. Would you like to be on our Student Council? Student councillors run class meetings, collect student voice about learning, student wellbeing and curriculum. Your Student Council will work with you to complete community projects and tasks to improve our school. There are also a number of other leadership opportunities on offer.

How will you lead others?



Blues
Class Councillors
Class meetings
Combined Intermediate Schools Leadership
Camp
Enviro Group
Hosts
International Students
House Captains
ICT Technicians
Kaea mo te roopu kapahaka o Kia Maia
Librarians
PE Monitors
Powhiri/Whakatau
Pupil Led Assemblies
Road Patrol
Student Council
Travel Safe Group
Whaikorero





"We have a huge number of sporting opportunities. You have plenty of chances to play lunchtime sport, summer and winter sport, go to Super 11 competitions (between 11 Intermediate schools) and you even have a chance to go to the Anchor AIMS Games. I went to the AIMS Games and it was an amazing experience. There are approximately 40 different sports to choose from. Whether you want to play for fun or be competitive, there will be something for you." Lucah Morresey



What will you choose?

Aerobics
Athletics
Basketball
Canoe Slalom
Cheerleading
Chess Cricket
Cross Country
Football
Futsal
Golf
Gymsport
Hockey
Indoor
Bowls
Kiwi Tag
Mountain Biking
Netball
Open Water Swim

PCT Challenge
Rock Climbing
Rugby
Rugby League
Skiing
Softball
Surfing
Surf Lifesaving
Swimming
Table Tennis
Tennis
Touch
Tryathlon
Ultimate Frisbee
Volleyball
Waterpolo
Yachting



Sport

Competitive
Lunchtime

Social Super 11 competitions
Representative Levels
NZ Anchor AIMS Games



Are you passionate about sport and movement? For you, is it about fun and play? Or do you like to compete and excel? You can join in on numerous social and competitive opportunities for participation in class, interclass, house competitions, school, between schools, Super 11 (Bay of Plenty/Poverty Bay) and at representative levels.



The games are an annual competitive elite tournament, based upon the Olympics Games, where Year 7 and 8 students from across New Zealand and overseas compete. Approximately one quarter of our school take part and we are certainly highly competitive.

*What's your
favourite
sport?*



The Arts

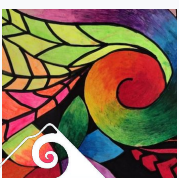
Visual Art
Music
Dance Drama



"MMI offers a wide range of amazing Performing Arts opportunities for everyone to get involved in! Whether you love to play an instrument, sing, dance or act, MMI has something for you! There are many music and visual art opportunities such as instrument tuitions, music extension, art extension, awesome pop and rock bands and Trash to Fash (recycled fashion competition). There are amazing dance and drama opportunities including; dance extension, jump jam, kapa haka, talent quest, DanceNZmade teams and solos and a hiphop team that competes in AIMS. So if you live and breathe performing arts, bring your talents to life at MMI!" Sienna Lagerberg



Band Quest "Standing on stage in front of lots of people, my two band mates and I look at each other and nod. The drummer counts 1,2,3,4 and we begin playing to cheers from the crowd. Band quest is an amazing experience and it is a great way to meet new people. Our band, CLaK CLaK BaNG, had lots of support from the school leading up to band quest. We had heaps of fun as a MMI band and even after bandquest, we stayed together learning new songs and rocking it." Cole Frazer





Does creativity live in your heart and soul? You can explore your creative talents through our Arts programme. Whether you are a budding producer or a future movie star, a soon to be discovered musician, a dancer or a theatrical genius, we have the right environment and expertise to bring your talents to life.



What will you choose?

AIMS Hip Hop
 Band Quest
 Dance and Drama
 Specialist Programme and Extension
 DanceNZMade
 Instrument Tuition: Cello, Clarinet, Flute, Drums,
 Violin, Saxophone, Trumpet, Trombone
 Jump Jam
 Music Specialist Programme and Extension
 Orchestral Group MMI/MMC
 Peace Posters
 Show Quest / Stage Art
 Singers [choir]
 Talent Quest
 Te Roopu Kapa Haka o Kia Maia
 Visual Arts Specialist Programme and
 Extension
 Wearable Arts

What's Your Jam?



Is this for me? Are you a techie? Does e-learning and ICT spin your wheels? Are you a hands-on learner? Do you love to cook? Do you like practical tasks? Do you like to create and build? Explore the technology curriculum in a range of different contexts.



Technology options

Digital Technology

Electronics

Food Technology

Hard materials

ICT Technicians

Robotics



Bring Your Own Device

(BYOD) You are strongly encouraged to bring either an iPad or Chromebook to school every day, to be used as part of your regular learning programme. Teachers will direct how these devices are to be used within the classroom. Some devices are provided in classrooms for students to use. BYOD will increase access to devices in your classroom. Devices are not to be used during break times, and are kept locked in classrooms during these times.



Technology

e-learning

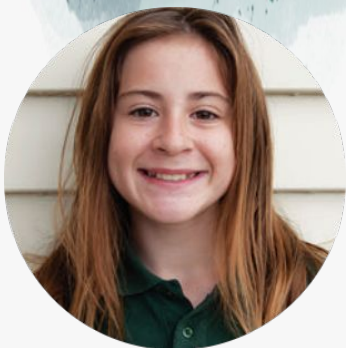
Bring Your Own Device (BYOD)

Digi Tech and Robotics

Hard Materials and Electronics

Food Technology





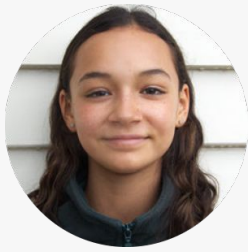
Camp: “It was the first afternoon of a three-day camp; I was bursting with excitement to get started on the adventures that lay ahead with my new classmates. After quickly picking our bunks and getting into togs activity number one awaited - the obstacle course. climb, balance, hang, crawl to the crocodile pit (disclaimer: no crocodiles but a pit you don’t want to fall into). I was amazed everyone was making the pit in one try ... not a drop of water... I had to give it a try. I was nervous but as soon as I touched the rope I knew I had to do it. My friends were cheering me on and I ran, jumped on the rope and cleared the pit ... making my friends proud. A great start to three days of new challenges, teamwork and fun.” By Amy Fraser

Outdoor Education

Education Outside the Classroom
(EOTC)

Do you love the outdoors?
Do you like to challenge yourself? Our Education Outside the Classroom programmes will enhance your learning and your belief in what you are capable of achieving.





Swimming sports: “Goggles? Check! Cap? Check! Good attitude? Check!! Freestyle, butterfly, backstroke, which race is next? My friends with juices in their hands, cheering me on, “GO Ramari”! I gasp for air as I focus on my speed and technique. 2nd, 3rd! Wahoo! I feel so proud of myself and everyone who challenged themselves at swimming sports. As I look for my soggy towel, I think to myself, I really CAN accomplish so much when I put my mind to it.” By Ramari York



What Adventures will you have?

Education Outside the Classroom (EOTC)

Camps have usually taken place in term one. Traditionally camps are organised on an annual basis and the location can change from year to year, based on availability, however this is subject to change based on costs being able to be met. You will also have the opportunity to trial to attend the annual sports camp and if you are selected as a student leader, you will be able to go to the Combined Leadership Camp





I strongly recommend MMI because of the education and high quality of the learning guidelines. The teachers and classmates are all kind-hearted. During ESOL online classes, my ESOL teacher, Kathy helped me to get through my grammatical mistakes. Of course, these lessons helped my writing skills improve a lot. In class, my buddy helps me to learn some Maori words and she also helps me with what we are doing in learning time. The students concentrate during study time which can actually help you to focus on your work as well. MMI is in a good place, near the lovely beach shore. Because of these reasons, MMI is a great school to belong to.” Yeram Lee

Would you like to come to our school? Do you like to make friends with kiwi kids? Would you like to learn English in vibrant, student focussed learning environments? Would you like to live by the beach, in a community that is safe and friendly? Do you like to try new things? Mount Maunganui Intermediate is the place for you!



International Students

International Student Information





You will be warmly welcomed and looked after with care and attention by our professional and dedicated staff and our students. We look forward to having you as a member of our school community and know that your time in our school will be rewarding and enjoyable.

You will love our school. We specialise in the care and education of international students. Our programmes and resources cater to the unique needs of our students and are proven to ensure your success and well-being. Your time with us will help you markedly improve your English, learn about the New Zealand way of life, and leave with high expectations for personal growth and education success.



Would you like to live beside the beach? Would you like to live near 2 golf courses?





"My first day at MMI was... amazing. There was so much to see and so much to do. I was feeling a bit nervous at first because it seemed like only yesterday I was putting my backpack on to go to my first day of primary but I loved every minute of my first day. I already had so many friends but I was excited to make some new ones and that's what happened. All of the teachers were so welcoming, kind and helpful. I felt so happy and relaxed." Lily Wall

Learning Conferences

You will be supported to lead your own learning conference twice a year. In these three way conferences you will share and discuss your learning, achievement and learning goals.



Home School Partnerships

It is really important that there is open communication between you, your teacher and your home. We will contact parents and caregivers when a need arises, to discuss concerns and positives about your learning, behaviour and well-being. Communication about your welfare and progress is encouraged at all times. Parents' first contact should be with the class teacher.



Home School Partnerships

Learning Conferences Specialist Programme Home School
Partnerships Parent Support Group Coastal Values





Specialist Programme

You will receive reports written by specialist teachers each cycle. The cycles include Digital Technology, Dance Drama, Food Technology, Hard Materials, Electronics, Music, and Visual Art. Specialist teachers are available during learning conferences for you to discuss your learning and how you have coped in the specialist classroom and subject, in preparation for your secondary schooling.

Parent Support Group

Would someone in your family or whānau be able to help? We have an active parent support group who meets once a term to plan events, fundraising and community working bees



Coastal Values

We have three values: – Respect – Whakaute – Pride – Whakahii, and – Learner – Akonga Mount Maunganui Intermediate is a PB4L school. Positive Behaviour for Learning is where we work with you to develop: – positive and respectful relationships – a caring culture where students and staff feel valued and the whole school community feels safe – consistent expectations for your learning and behaviour across all settings and by all staff We teach you behaviours instead of “expecting” that you just know what to do. We do this to maximise your time spent on student learning.



How will we work together?



Classroom Environment “A great classroom environment makes all the difference to your experience at school. At Mount Maunganui Intermediate (MMI), your classmates and teacher will become your whanau. The classrooms at MMI are always warm, colourful, and welcoming. Teachers and classmates are always happy to help and include you in all the fun activities on offer. There is always something exciting to be part of in class and everybody encourages and watches out for each other.” Ruby Preston



First day... “Sheepish smiles and shy hellos are what greeted me on my first day at Mount Maunganui Intermediate. My first day was exhilarating but also nerve wracking for I was in a new environment with new people. My teacher was supportive of all the new MMI students, in fact all the teachers were and so were the older students that had already been at MMI the previous year. Lots of the year 8 students were willing to help out and show us around, and by the end of the day I knew where everything was.” Belle Rowe

Classrooms and Facilities

Upgrades Location
What’s to come?



“On my first day of school at MMI the butterflies in my stomach ceased as I walked inside the classroom. My teacher made me feel welcome at once, asking how my holidays were and how I was feeling about my first day. All the year 8s in my class showed me, and the rest of the year 7s in my class, around the school. By the end of the day I knew where everything was. A top tip for your first day is to stay confident and keep a smile on your face.” Reuben Kingston-Smith



Upgrades

Did you know that Mount Maunganui Intermediate has undergone some major changes in the last eight years? The school has gone about refurbishing or rebuilding almost every classroom on site.



Our classrooms are modern, warm, welcoming spaces. Your classroom is where you spend most of your day. It is important that the place you spend most of your day is a flexible and modern learning environment.

Have you seen our updated classrooms and facilities?

- Astroturf
- Basketball Area
- Dance Drama Studio
- Green Space
- Food Tech Room
- Hockey
- Netball
- Lighting and Sound Upgrade
- Basketball
- Cricket Pitch
- Extensive Fields
- Fitness Trail
- Hall
- Swimming Pool
- Wireless Network
- Library/Information Centre



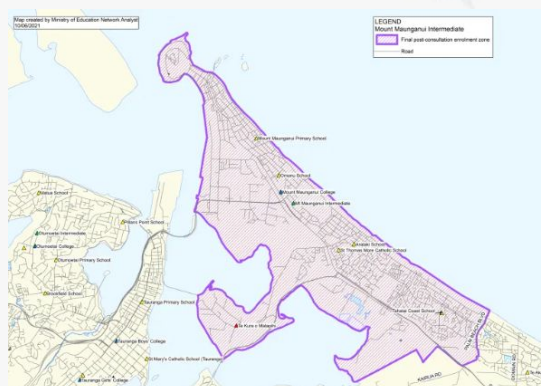
What's to come?

Further Roll Growth Classrooms Specialist
Classroom Upgrades



How do I enrol?

Do you go to one of our contributing schools? You will receive enrolment information through your school. Work with your parents/ caregivers to complete the online enrolment and administration forms when received. If you do not go to one of our contributing schools, check out our website and get all information from the Enrolment Section. Should a parent/caregiver meeting be required please phone to make an appointment with the Principal or Deputy Principals, prior to class lists being compiled in early November www.mtint.school.nz



Our Zone

Do you live outside our school zone? Complete the enrolment form as an “out of zone application”. The zone description can be found on our website. The ballot for out of zone students closes and is drawn in September.

Buses

You can catch the School Hopper Buses from our school bus bay on Links Ave, the best place to see information on the school buses is at www.baybus.co.nz/school-hopper



Enrolment

