



# MT MAUNGANUI INTERMEDIATE

## IN THIS ISSUE

- From the Principal
- MMI Sports Prizegiving 2022
- Whānau 13 Learning Page
- Graeme Dingle Foundation Regional Awards 2022
- Year 8 Social
- PSG Fundraising
- Rā Whakangahau
- Japanese Homestay
- Useful Information
- Coastal Values
- Community Notices

## COMING EVENTS 2022

### NOVEMBER 2022

10	Rā Whakangahau
11	Super 11 Volleyball
16	Teacher Only Day – No School
17	Super 11 Beach Challenge
18	Super 11 Triathlon
22	School Athletics – Year 8
23	School Athletics – Year 7
24	Orange Day – Road Patrol/ Travel Safe

### DECEMBER 2022

2	Super 11 Athletics
6	BOT Meeting
8	Year 8 Social
9	Last Lunchonline Ordering Day
15	Last Day Term 4 – 12pm Finish

## COMING UP

### TEACHER ONLY DAY

WEDNESDAY 16 NOVEMBER

NO SCHOOL

## WEDNESDAY CHALLENGE

Congratulations to MMI for achieving 85 percent - the highest percentage across Tauranga schools. Wednesday Challenge would like to thank students, staff and families for creating a better place to live by choosing active travel, buses and carpooling.

Keep fit, feel more connected and enjoy the journey with your friends and whanau. Keep up your good mahi - and enjoy spending your \$500 prize.



Kia ora Parents and Whānau

It's been a busy and productive week here at MMI. It has been great to see our students engaged in their classrooms and making the most of the early summer weather in our grounds. Athletics practices are well underway with all classes preparing for the school athletic sports in week 6.

Practices for our year 8 Social Dance are also happening during PE lessons. This event is the pinnacle celebration of two years at MMI and is always a great occasion. Watch out for more information about the Social Dance in the next few newsletters.

#### Bus behaviour

We have unfortunately had a small number of students letting us down by behaving badly on the buses to and/or from school. Some bus drivers are feeling increasingly frustrated and at times, unsafe due to the poor choices that some students make when not supervised. Examples of poor choices are things such as playing inappropriate explicit music, swearing and yelling.

If your child uses a bus service, please talk with them about treating the bus drivers with respect and about showing integrity by behaving well, even when there are no adults around to remind them. A simple hello when getting on the bus and a thank you when leaving goes a long way and costs us nothing.

#### SPECIAL NOTICE RE TOD

#### **Teacher Only Day Change of Date**

#### ***Please note a change of date:***

We had a Kāhui Ako Teacher Only Day scheduled for Monday 14 November. Unfortunately, NZEI has scheduled Paid Union Meetings for primary teachers in the same week.

To avoid two disruptions to school in one week, we have decided to change the date for our Teacher Only Day at MMI to **Wednesday 16 November**. Teachers will be working in the morning and union members will then attend a Paid Union Meeting in the afternoon. Please support us by keeping your child at home on this day.

Our apologies for the change in date. Our thinking about changing the date is to minimise disruption for teaching and learning.

If you have any questions, please contact the school office.

I hope you all have a great weekend.

Ma te wa  
Whaea Melissa

## MMI SPORTS PRIZEGIVING 2022

***We have 5 special prizes awarded each year for sports at MMI.***

***These are:***

***1: Farrell Trophy.***

*Awarded to the top performing athlete in an individual sport.*

All students may submit their sporting achievements if they would like to be considered for this award.

***2: Outstanding achievement in sport award.***

*-Year 7 Girl, Year 8 Girl, Year 7 Boy, Year 8 Boy.*

All students may submit their sporting achievements if they would like to be considered for this award.

*If your child has achieved excellence in an individual sport and you would like to nominate them for the **Farrell Trophy**, [please fill in this google form](#).*

**Please note that this deadline is next Friday 11th November**

If your child has achieved excellence in a range of sporting settings, with outstanding achievement and you would like to nominate them for an **Outstanding achievement in sport award**, [please fill in this google form](#).

**Please note that this deadline is next Friday 11th November**

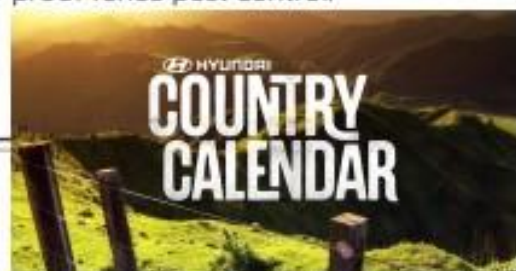
## Whānau 13 Learning Page



This term for reading we are completing a project called 'Destination World'. We get to 'travel' around the world learning about different countries and cultures. The programme has 18 different worksheets, and many journals. They vary from difficulty and levels. All journals are based on a country or island from around the world. For each worksheet completed, we can receive \$25, \$50, \$75, or \$100 (fictional dollars). Our marks are based on presentation, effort, and content. The money we earn will be spent at the end of year celebration where we will watch a movie and eat snacks. We are enjoying the challenge and flexibility this reading project is giving us this term.



**Inquiry:** This term, we are learning about the environment. As part of our programme we are watching 'Country Calendar'. We have been learning about pests, deer, native animals and plants. After and during the videos, we fill out a sheet where we have to identify the 'problem' the farmer has faced, the environmental concerns each farm endure and whether their solution is positive or negative and why. So far we have learnt about the rapidly increasing number of wilding pine trees and how they burn them off predator proof fence pest control.





## GRAEME DINGLE FOUNDATION REGIONAL AWARDS 2022

Earlier in the year we were able to nominate students who stood out representing each Kiwi Can value.

Well done to Natasha Broederlow (Whānau 6) who took out the 2022 award for Resilience at the Graeme Dingle Foundation Regional Excellence Awards.



## YEAR 8 SOCIAL

A celebration of your time at Mount  
Maunganui Intermediate

**YEAR 8  
SOCIAL  
DANCE**

**GET YOUR TICKETS  
NOW!  
FILL IN THE GOOGLE  
FORM AND PAY  
ONLINE.**

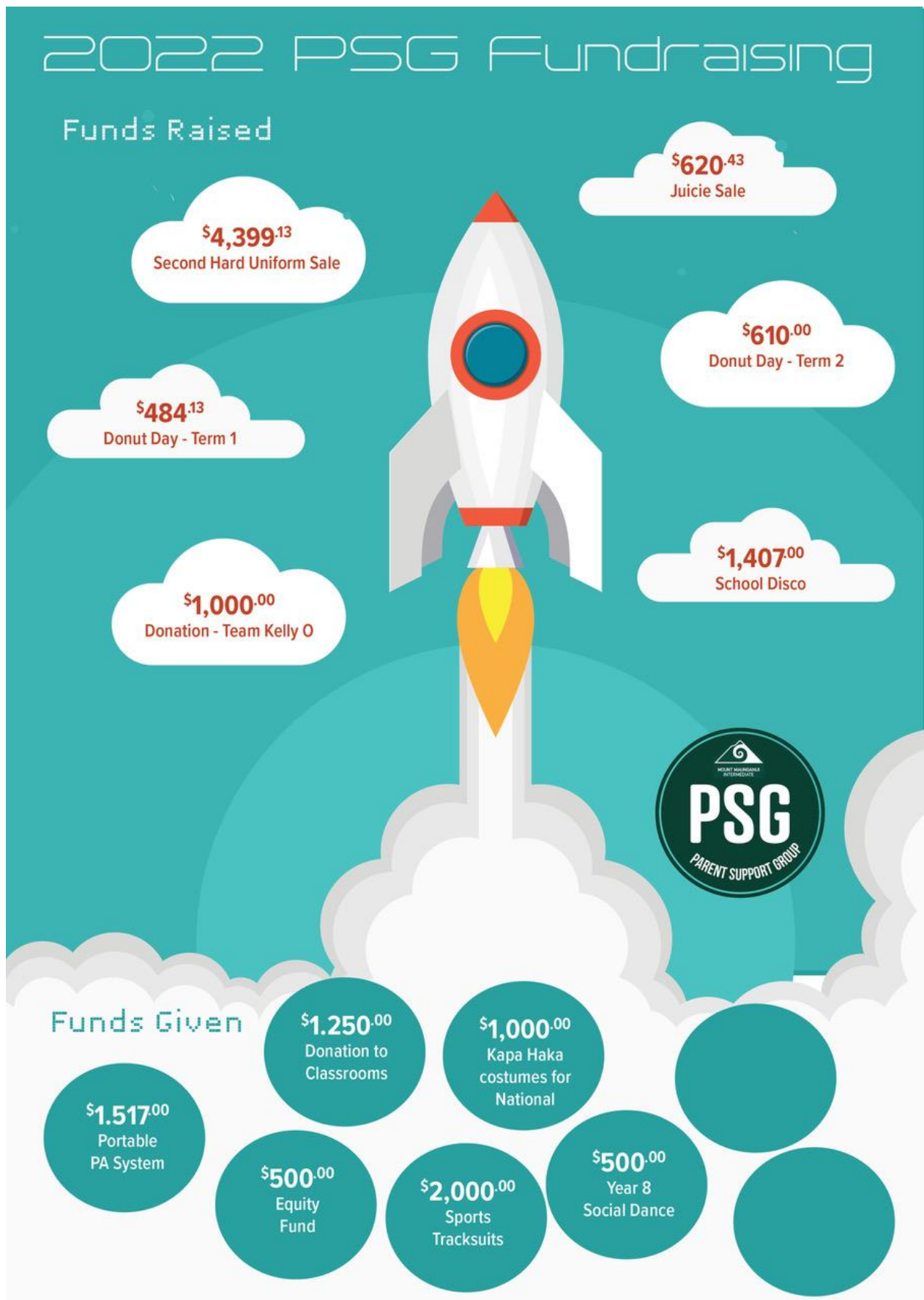
Thursday 8th December  
2022  
7-9PM  
@ MOUNT  
MAUNGANUI  
INTERMEDIATE

A vibrant, colorful graphic with a yellow and blue background. It features a large, stylized eye on the left, a watermelon slice on the right, and a pink and yellow DJ mixer in the center. There are also orange slices and pink hearts scattered throughout.

[Link for google form](#)

## PSG FUNDRAISING

PSG fundraising update. Thank you to all the volunteers who help with the fundraising for our school!!





## RĀ WHAKANGAHAU

Mount Intermediate is excited to host our Rā Whakangahau which is a kapa haka celebration that allows the schools in our Kāhui Ako cluster to perform in front of their whānau and friends. Below is a poster with the timetable for the day.



*Rā Whakangahau  
2022 programme*

**10am - Whakatau and opening karakia**  
**10.30am - ECE centres**  
**10.45am - Break**  
**11am - Omanu**  
**11.15am - Break**  
**11.30am - Tahatai Coast**  
**11.45am - Break**  
**12pm - Mount Primary**  
**12.15pm - Break**  
**12.30pm - Arataki**  
**12.45pm - Break**  
**1pm - Mount College**  
**1.15pm - Break**  
**1.30pm - Mt Maunganui Intermediate**  
**1.45pm - Closing karakia**

# Rā Whakangahau 2022

**Thursday 10th November  
Mount Maunganui Intermediate**

**WHAKATAU 10 AM  
MUTUNGA 2 PM**

*KAI - Food carts & Sausage Sizzle*





## JAPANESE HOMESTAY

ARE YOU GOING TO MMI  
NEXT YEAR?  
DO YOU WANT TO HOST A  
HOMESTAY

### JAPANESE STUDENT 2023?

We have a group arriving from Ritsumeikan Keisho JHS in Japan in February for 11 nights. Arrival date: (TUE) 14th February 2023, 2-230pm

Departure date: (SAT) 25th February 2023, 8am

We are seeking home-stays for these students.

#### Requirements:

A bedroom with a desk or small table and chair for the students need to be provided.

Each student needs their own bed. A mattress on the floor is not acceptable. The host family also needs to provide meals, and friendly and encouraging atmosphere in which the students can practice speaking English and learn about the New Zealand way of living.

Host families must be able to take 2 students for the duration.

Hosts must agree to the Police vetting processes.

Each student will pay their host family \$45 per night. So each host family will receive \$990 for 11 nights.

If you are interested please complete the [Google form](#) by Friday 4th November

**QUESTIONS? EMAIL  
RENEE THURSTON  
R.THURSTON@MTINT.SCHOOL.NZ**



#### Confirmed arrival and departure dates are:

Arrival date: (TUE) 14<sup>th</sup> February 2023, 2-230pm

Departure date: (SAT) 25<sup>th</sup> February 2023, 8am

Link for the [google form](#)

Mt Maunganui Intermediate School, 21 Lodge Avenue, Mt Maunganui 3116

Phone 07 575 5512 Email: [admin@mtint.school.nz](mailto:admin@mtint.school.nz)

Facebook: <https://www.facebook.com/Mtint.school.nz/>

# USEFUL INFORMATION

<b>SCHOOL TIMETABLE</b> School Starts – 8.45am Morning Interval – 10.25am Lunch – 12.20pm Dismissal – 2.45pm	<b>ABSENTEE INFORMATION</b> Please inform us of your child's absence by using one of the following ways: Text – 027 232 0446 Phone – 575 5512 ext 1 Email – <a href="mailto:absentees@mtint.school.nz">absentees@mtint.school.nz</a> Your child's teacher will see their absence. Please do not email the teacher directly as they may not see it or they may be absent.	<b>BUS INFORMATION</b> Click here to go to the Bayhopper School Bus website – <a href="#">Bus Information</a>
<b>MEDICATION</b> If your child has a severe medical condition or needs to take medication at school please contact the office.	<b>TERM DATES</b> <b>Term 1</b> - 1 February to 13 April (14 <sup>th</sup> TOD) <b>Term 2</b> - 2 May to 8 July <b>Term 3</b> - 25 July to 30 September <b>Term 4</b> - 17 October to 15 Dec (noon)  <b>TEACHER ONLY DAYS:</b> <ul style="list-style-type: none"> <li>Monday 14 November</li> </ul>	<b>TERM 4 UNIFORM/SHOES/HATS</b> Term 4 recommends all students to wear a school hat. Hats can be purchased from the Papamoa Warehouse or NZ Uniforms. It is beneficial for students to wear a hat when they are outside.  We appreciate your child may have specific footwear requirements, due to severs, or other conditions. Please consult with us before you purchase shoes that may not fit with our uniform requirements. All shoes must be plain black.  For more information about uniform expectations visit <a href="https://mtint.school.nz/uniform/">https://mtint.school.nz/uniform/</a>
<b>DROPPING YOUR CHILD TO AND FROM SCHOOL</b> These are NOT drop off zones: <ul style="list-style-type: none"> <li>Lodge Avenue Staff Carpark</li> <li>Lodge Avenue Turn Around</li> <li>The Bus Bay on Links Avenue</li> </ul> This is for the safety of your children, when dropping off or picking them up. <u>Please refrain from entering and parking in these areas.</u>	<b>SCHOOL TELEPHONE</b> The school office telephone is for <b>emergencies only</b> .  Please make sure your child knows what their after school arrangements are before they come to school. These calls are at a cost to the school.	<b>PARENT SUPPORT GROUP</b> We are calling for anyone interested in being part of the Parent Support Group (PSG) to contact us.  They are always looking for volunteers to join their team.  Please email if you are interested: <a href="mailto:mmintermediatepsg@gmail.com">mmintermediatepsg@gmail.com</a>
<b>PAYMENT OF STUDENT ACCOUNTS</b> Thank you so much for continuing to pay your student accounts. When doing so please enter your child's name and what you are paying for. If you do not enter the reference we will credit the funds off the next item that is due. Many thanks from the office.	<b>ORDERING LUNCHES</b> We operate a lunch online system. You do need to register for this. The website for this is: <a href="http://www.lunchonline.co.nz">www.lunchonline.co.nz</a> .  You can order from 9 <sup>th</sup> February for the following days of the week:  <b>Tuesdays/Thursdays</b> – Pita Pit <b>Wednesday/Fridays</b> – Subway <b>Thursdays</b> – St Pierre's Sushi	<b>CHANGE OF DETAILS</b> It would greatly assist us if you could please advise the office if you have any changes of address, phone numbers, email addresses and emergency contact details. In the event of an emergency, sickness or injury we need to be able to contact someone who can collect your child.
<b>COMMUNICATION</b> Check out our website, newsletters, daily notices and Facebook links.  <a href="https://mtint.school.nz/">https://mtint.school.nz/</a>  <a href="https://mtint.school.nz/mmi-daily-notices/">https://mtint.school.nz/mmi-daily-notices/</a>  <a href="https://www.facebook.com/Mtint.school.nz/">https://www.facebook.com/Mtint.school.nz/</a>  <a href="https://mtint.school.nz/newsletters/">https://mtint.school.nz/newsletters/</a>	<b>SPECIALIST FEES</b> Specialist Fees are \$40.00 per year. This covers the following specialist subjects we offer here at MMI:  <b>Food Technology</b> <b>Hard Materials/Electronics</b> <b>Media Studies/Robotics</b> <b>Music</b> <b>Visual Arts</b> <b>Dance and Drama</b>	<b>ONLINE PAYMENTS</b> <b>SPORTS FEES/OPTIONAL TRIPS ETC -</b> If you wish to pay online or by automatic payment you are encouraged to do so. Our bank account number is:  <b>12 3146 0104711 03</b>  Please put your child's name as the reference.  <b>PLEASE NOTE</b> – we have strict cut off times. When we give a due date this cannot be changed. Please do not be disappointed if you miss out if the date has passed. No correspondence will be entered into if you miss a cut off time.

# COASTAL VALUE CERTIFICATES 2022

## Term 4 – Week 3

1	Henry Scott	For showing dedication towards your learning and striking a healthy balance of working hard and playing hard! Kei runga noa atu koe!
2	Lexi Leslie	For constantly showing commitment and dedication towards your learning! He whetū koe!
3	Luca Gray	For consistently making accelerated progress in all areas.
4	Ella Cooper	For consistently approaching her daily life with a happy, bubbly attitude. This is definitely noted in the mornings when she arrives at school. Keep it up Ella.
5	Nneka Tocker	For always being true to yourself. You have completed your tests ahead of time and are showing enthusiasm and independence in your learning. You have been awesome to teach this year!
6	Tahliah Murray	For always having an enthusiastic and positive attitude towards your learning and school activities. He whetū koe!
7	Sage Nasey	For your enthusiasm in Pāngarau this week, you worked hard learning new concepts and supported others who needed it. Koia kei a koe!
8	Mila Piatek	For a great work ethic across all subject areas. It is great to see you self-managing your learning with a positive attitude. Well done Mila!
9	Izzy Steele	For putting in the effort and taking ownership of your learning with great results, especially in maths. He whetū koe!
10	Autumn Parchomchuk	For putting in the effort and taking ownership of your learning with great results, especially in maths.
11	Anaya Shaikh Siddiqui	For the excellent attitude that you have toward learning and others. Te mutunga mai o te pai!
12	Olivia Taurerewa	For working well in class and always following the MMI Coastal Values. Well done with your spelling result Olivia. Keep up the great effort.
13	Cameron Hight	For consistently using her initiative in and around our classroom. No task is ever too big or laborious for this wonderful girl. You are a real leader Cameron.
14	Maggie Hammond	For quickly understanding what focus is required to work towards being the best you can be in all areas. Well done.
15	KJ Bennett	For your attitude, effort and improvement in all of your asTTle assessments. I'm proud of you. Kei te whakahīhī au ki a koe! 🍀



<b>16</b>	Ayla Wild	For your amazing honesty and integrity when you found something that wasn't yours! Well done Ayla, this is outstanding!
<b>17</b>	Quinn Barton	For showing enthusiasm and independence in your learning and having that desire to achieve well. Lovely to see this development Quinn. Kei reira katoa!
<b>19</b>	Ella Martin	For your determination and perseverance in understanding Integers and BEDMAS. Te mutunga mai o te pai!
<b>20</b>	Max Jeffcoat	For being a thoughtful and helpful member of Whānau 20. Thank you Max!
<b>21</b>	Eli Beer	For actively seeking out ways to improve your learning. You set yourself high learning goals and work hard to achieve them. Tino pai tō mahi!
<b>23</b>	Quinn Coupland	For staying focussed and completing all tasks, along with sharing your thoughts and ideas during Maths. Tino pai rawa atu!
<b>24</b>	Isaac Richards	Always working hard. Your confidence has grown so much and I am really proud of you. He whetū koe!
<b>25</b>	Abbey Parker	For putting in a fantastic effort in your descriptive writing. Great focus, Abbey. Ka mau te wehi!
<b>26</b>	Molly Laery	For being studious in all aspects of classroom life and looking to improve across the board. Mauria te pono!
<b>Digi Tech</b>	Esme Rutherford Whānau 15	For your active listening and engagement in all digi tech lessons. Ka pai Esme!
<b>Dance &amp; Drama</b>	Maya Smith Whānau 9	For your exceptional engagement, positivity and leadership throughout dance and drama. Ka pai tō mahi Maya!
<b>Food Tech</b>	Zara Burch Room 17	For acting with maturity of thought and action. Thank you for being such a polite young lady Zara!
<b>Music</b>	Jack Pick Room 13	For making a great start to cycle 6 Music lessons.
<b>Visual Arts</b>	Kiahn Ngaheue Room 12	For great effort with your self-portrait, excellent shading, detail and proportions. So realistic, well done!
<b>Hard Materials</b>	Tiger O'Reilly Room 3	For a great effort during hard materials, and full marks in your mastery test.
<b>Kiwi Can</b>	Damian Clark - Room 17	For staying focused, enthusiastic, & demonstrating respect, even when there were distractions around. Koia kei a koe!

## COMMUNITY NOTICES



**HAVE A GO DAY...**

**Saturday 12<sup>th</sup> Nov.**

**2.00 pm**

**Waimarino Water Park  
(36 Taniwha Place, Bethlehem)**

**Register with:**

**Tim - 021 026 38624**

CANOE SLALOM



- Do you want to learn an "extreme"(but safe and super fun!) sport?
- Do you love the outdoors?
- Do you love being part of a team? Maybe represent New Zealand one day?
- Does socialising with other kayakers from local schools in our area sound like fun?
- Do you want to learn with excellent instructors at a friendly, well-established club that caters for all level

For more information, contact: Tim  
Canoe Slalom Bay of Plenty Committee Mem.  
(Mobile) 021 026 38624  
(E-mail) [camps@canoeslalombop.co.nz](mailto:camps@canoeslalombop.co.nz)  
[www.canoeslalombop.co.nz](http://www.canoeslalombop.co.nz)



All gear provided. No cost.

 **register now**



**REGISTRATIONS ARE OPEN FOR THE 2022-2023 WEET-BIX KIDS TRYATHLON.  
YOU CAN ENTER BY JOINING THE MMI SCHOOL GROUP [HERE!](#)**

### Registration Details

Mt Maunganui 2022-2023 Weet-Bix Kids TRYathlon  
Arataki Park, Mt Maunganui  
Sunday, 27 November 2022



# HEY STUDENTS!

## ARE YOU UP FOR A CHALLENGE?

YOU'RE A CHANGE MAKER RIGHT?  
AND A LEADER OF TOMORROW!



## EARN REWARDS WIN PRIZES

## MAKE A DIFFERENCE DO SOMETHING GOOD



JOIN THE WEDNESDAY CHALLENGE

[wednesdaychallenge.co.nz](http://wednesdaychallenge.co.nz)



## GIRLS CRICKET

Mount Maunganui Cricket Club are looking for intermediate aged girls for term 4 at the Mount Maunganui Cricket Club. They have 5 players currently and would like another 3-4 if possible.

If anyone is interested, please contact them direct by emailing:

[mmjc.membership@gmail.com](mailto:mmjc.membership@gmail.com).

# Music of the Bay

 **ōtūmoetai**  
INTERMEDIATE SCHOOL

  
MOUNT MAUNGANUI  
INTERMEDIATE

  
BETHLEHEM  
COLLEGE

 **PĀPĀMOA**  
COLLEGE

An afternoon celebrating the young talent coming through our local intermediate schools. Bands from Otūmoetai Intermediate, Bethlehem College, Mount Intermediate, and Papāmoa College are putting on a final show for 2022 for family, friends, and music lovers! Come along to see the amazing talent we have here in the Tauranga region.... They will blow you away!!!!

**13 Nov | \$10.00 | 3:00**  
**2022 | ENTRY | PM**

**MAUAO PERFORMING ARTS CENTRE | TOTARA STREET**



<https://totarastreet.co.nz/>



@totara\_street

**TOTARA**  
ST.  
No. 11

Tickets Online  
Door Sales  
Open Bar onsite



Link to our website for registrations and more info is: <https://www.stingrays.basketball/junior-development-trainings/>

 **The Athlete's Foot**

# 2023 SHOE GUIDE

 **School Rewards**

## APPROVED SCHOOL SHOES

 <b>RILEY</b> Junior \$144 <sup>99</sup> Senior \$159 <sup>99</sup>	 <b>APEX</b> Junior \$159 <sup>99</sup> Senior \$179 <sup>99</sup>
 <b>FLINDERS</b> Senior \$169 <sup>99</sup>	 <b>LENNOX</b> Senior \$159 <sup>99</sup>
 <b>BOSTON</b> Senior \$159 <sup>99</sup>	 <b>LEO</b> Senior \$129 <sup>99</sup>

## APPROVED SCHOOL SHOES

 <b>BELLA</b> Junior \$139 <sup>99</sup>	 <b>BELLA</b> Senior \$159 <sup>99</sup>
 <b>AVA</b> Junior \$139 <sup>99</sup> Senior \$159 <sup>99</sup>	 <b>AVA BUCKLE</b> Junior \$139 <sup>99</sup> Senior \$159 <sup>99</sup>
 <b>KRISTEN</b> Senior \$159 <sup>99</sup>	 <b>ZAHLI</b> Junior \$134 <sup>99</sup> Senior \$154 <sup>99</sup>

## APPROVED SCHOOL SHOES

 <b>JAX 2</b> Junior \$114 <sup>99</sup>	 <b>STEVIE 2</b> Junior \$114 <sup>99</sup>
 <b>PANDORA</b> Junior \$99 <sup>99</sup>	 <b>ANA</b> Junior \$59 <sup>99</sup> Senior \$69 <sup>99</sup>
 <b>NOOSA</b> Junior \$89 <sup>99</sup>	 <b>KORU</b> Junior \$94 <sup>99</sup>

 **9 MONTH  
OUTSOLE GUARANTEE**

ALPHA outsole guarantee applies to selected styles only. Ask in-store for more details.

afterpay

AVAILABLE  
IN-STORE

**\$10 OFF** 

Ascent \$10 OFF discount pricing valid from 4/01/2023 - 6/02/2023. School styles only.

**Mt Maunganui Intermediate School, 21 Lodge Avenue, Mt Maunganui 3116**  
 Phone 07 575 5512 Email: [admin@mtint.school.nz](mailto:admin@mtint.school.nz)  
 Facebook: <https://www.facebook.com/Mtint.school.nz/>

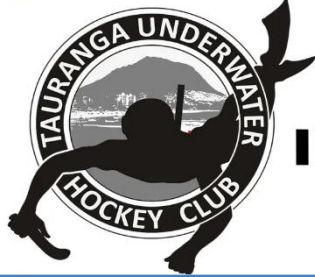




**THE**  
**ATHLETE FACTORY**  
NEW ZEALAND



# UNDERWATER HOCKEY



"HAVE A GO"  
"NEW"

## PEE-WEE PUCK

DO YOU LOVE WATER ACTIVITIES?

WANT TO TRY SOMETHING NEW?

ARE YOU AGED 9 TO 13 YEARS?

DURING TERM TIME : SUNDAY 4PM - 5PM

3 SESSIONS FREE - JUST PAY ENTRY INTO BAYWAVE  
RECEIVE A FREE PASS TO BAYWAVE AFTER YOUR 3RD

SESSION (WHILE STOCKS LASTS)

ALL GEAR SUPPLIED

For more details contact:

Tauranga Underwater Hockey

[www.sporty.co.nz/tauranguhc](http://www.sporty.co.nz/tauranguhc)

or [emailtuwh@gmail.com](mailto:emailtuwh@gmail.com)

Made with PosterMyWall.com

The Athlete's Foot

## GET FITTED BY THE EXPERTS TODAY

In partnership with

**MOUNT MAUNGANUI  
INTERMEDIATE SCHOOL**

### \$10 DONATED BACK TO YOUR SCHOOL

Every time you buy a pair of shoes.

The School Rewards Program is a great fundraising opportunity, with \$10 from every pair of shoes purchased being donated back to your school.

This applies to the whole family across our fantastic range of school, sports, work and casual shoes.

Ask one of our friendly team in store for more details!

 **School Rewards**  
[www.theathletesfoot.co.nz](http://www.theathletesfoot.co.nz)

**Bayfair**  
(07) 282 7963

# PIPS

PEOPLE PLANTS SCHOOLS

In school garden programme

## SEEDLING SALE

MOUNT MAIN STREET  
MARKET

SUNDAY  
6TH NOVEMBER  
8.30AM -12.30pm



# PĀPĀMOA ORTHODONTIST

**OPEN  
NOW**

1G Tara Road, Pāpāmoa  
[hello@papamoaorthodontist.co.nz](mailto:hello@papamoaorthodontist.co.nz)  
(07) 579 3571

Dr Rachel Farrar BDS DClinDent (Ortho) MRACDS (Orth)

[papamoaorthodontist.co.nz](http://papamoaorthodontist.co.nz)

Mt Maunganui Intermediate School, 21 Lodge Avenue, Mt Maunganui 3116

Phone 07 575 5512 Email: [admin@mtint.school.nz](mailto:admin@mtint.school.nz)

Facebook: <https://www.facebook.com/Mtint.school.nz/>



**SAL'S MOUNT MAUNGANUI**  
217 MAUNGANUI ROAD  
MOUNT MAUNGANUI, TAURANGA  
**07 574 7257**  
**SALS.CO.NZ**

Available on: **Uber Eats** **delivereasy**

## *The Party Godmother*

CUSTOM PARTY HIRE  
& REUSABLE PARTY  
SUPPLIES

PARTYGODMOTHER.CO.NZ

KIWIPARTYGODMOTHER  
@GMAIL.COM



### **FLAG GRIDIRON**

Flag gridiron is an inclusive, non-contact, fast, fun, condensed version of American football. The response from the kids has been amazing and it would be great if they wanted to continue further in the sport during the spring/summer.

Children of all ages are welcome, along with their friends and whanau. Practice sessions for children are currently being held weekly, every Saturday at 10.00am at Arataki Park, Tauranga.

For more information go to <https://www.facebook.com/BOPFlagFootball/>

