

17 February 2023

# Pānui

MMI Newsletter No. 2



## COMING EVENTS

### February 2023

27 PSG Meeting - 7pm

### March 2023

01 Swimming Sports

02 Paid Union Meeting - Half Day

03 Super 11 Surfing

10 Super 11 Open Water Swim

10 Super 11 Tennis

10 Super 11 Ki O Rahi

17 Super 11 Swimming

24 Super 11 Touch Rugby

### April 2023

04 HPV Vaccinations - Year 8

06 Teacher Only Day (no school)

06 End of Term One

07 Good Friday (no school)

24 Start of Term Two

25 Anzac Day (no school)

## Term 1, Week 3

### IN THIS ISSUE

- From the Principal
- School Payments
- MMI Basketball
- Useful Information
- Coastal Values
- Community Notices



### PAID UNION MEETING

THURSDAY 2 MARCH - SCHOOL CLOSSES AT 12PM

Buses will be here at 12pm to pick students up

## PSG MEETING Monday



27th February  
7pm



**STAFFROOM**

*New members welcome*



**lunchonline**  
www.lunchonline.co.nz

If your child is in year 8 and orders Lunchonline, please check their room number has been updated for 2023.



**MOUNT MAUNGANUI  
INTERMEDIATE**

☎ 07 575 5512

✉ [admin@mtint.school.nz](mailto:admin@mtint.school.nz)

21 Lodge Ave, Mount Maunganui, 3116

**[mtint.school.nz](http://mtint.school.nz)**

# POIPOIA TE KĀKANO KIA PUĀWAI

Nurture the seed and it will blossom

KIA MAUAO TE TŪ

## FROM THE PRINCIPAL



Kia ora Parents and Whānau

Thank you for supporting us on Tuesday, when school was closed due to the weather forecast associated with Cyclone Gabrielle. Whilst our community escaped relatively unscathed, our hearts go out to the communities who have suffered unimaginable loss and damage. I'm sure that you, like most of us, watched the TV reports that captured the enormity of this disaster and felt the same sense of sadness and sympathy for the families affected by the storm.

Whilst slightly disrupted, week three has been a busy and productive week at school. We welcomed a group of students from Ritsumeikan Junior High School in Japan on Tuesday night. Huge thanks to the families who have opened their homes to host these students for two weeks. Yesterday, our two whānau classes taught our visitors how to make poi and perform our Maunganui haka. It was so cool to see our students as tuakana, teaching their peers from the other side of the world. Global connections are so beneficial and I was SO proud of our students conducted themselves.



Image: Melissa Nelson, Principal,  
Mount Maunganui Intermediate



### Settling into a new school

For year 7's, intermediate school can be a big change. Having spent six years in a smaller school, year 6 students are usually very familiar with their school mates, teachers and their environment. Friendship groups are often well established. When they come to intermediate, lots changes. Year 7's are exposed to a wider social group and to students from different contributing schools. Personally and professionally, I love our MMI community. I love that we are a rich, diverse community of families that make MMI a great place for everyone to learn. I hope that our year 7's are feeling more comfortable as the days go on. If your child is struggling in any way, your first port of call is their teacher. Make contact early if you have any concerns. Our staff are committed to partnering with you in the best interests of your child.

When wearing a uniform for the first time, or wearing a new uniform, we often have questions from parents about the uniform rules for the students. Below is some information that I hope will clarify any questions you may have about our uniform. Please note that we have plenty of stock of second hand uniform available to purchase at the school office, if it is needed.

All students have seen a powerpoint presentation in their classes that goes over uniform expectations. This is available on our [website](#) too.

# POIPOIA TE KĀKANO KIA PUĀWAI

Nurture the seed and it will blossom

KIA MAUAO TE TŪ

## FROM THE PRINCIPAL CONTINUED



### Footwear

A reminder that our school uniform consists of black shoes or school-style sandals.

- Sandals: School-style sandals have a back strap. Birkenstocks, crocs or jandals are not permitted.
- Winter shoes: Students may wear sports-style shoes, slip-on shoes or lace-up shoes; however the shoe must be plain black, including the laces, with no visible other colour on the edge of the sole or in branding.

If your child outgrows their school shoes or something happens to them, we have a small number of pairs on offer at the office, that can be loaned to your child whilst you arrange a replacement. Socks are also to be plain black, with no stripes, brands or logos.

### Jewellery

Students are allowed to wear a small amount of jewellery to school.

Our preference is that jewellery is limited as it is often not practical to wear jewellery at school and it is easily lost. The school takes no responsibility for lost jewellery. It is the responsibility of the wearer.

- Earrings must be stud or sleeper style - they cannot hang below the ear lobe for safety reasons. More than one earring in each ear is permitted, at the discretion of parents.
- One taonga or necklace can be worn. We ask that they are worn under the uniform if possible. No shell, plastic or bright necklaces are acceptable. Students may wear one ring and or one bracelet.
- Other facial piercings are not permitted, with the exception of a small nose stud (not ring).

Teachers reserve the right to ask students to remove any jewellery that is inappropriate or is a health and safety issue (eg in sport, PE, Hard materials, Food etc). This is at the discretion of the staff, not the students.

### Camp

It was fantastic to get whānau 2 and whānau 3 off to camp in the second part of this week. They are having a great time at Ngatuhua Lodge and have had great weather. If your child is feeling anxious about attending camp, please make a time to talk with your child's teacher. Our preference is that all children attend - our curriculum is focused upon camp on return to school and camp is also an opportunity for your child to develop some resilience. Rest assured, all children are well looked after and cared for at camp. If you have some concerns, come and speak with us. We are happy to work with you to make camp accessible for all children.

Finally, today was our school tryathlon. Thank you to Mr Logan and the team for the great organisation. It was awesome to see our children out there and giving it a go to gain points for their houses. There is nothing like some good old school spirit to put everyone in a great mood for the weekend.

Ma te wa  
Whaea Melissa



# SCHOOL PAYMENTS

Kia ora Parents and Caregivers

Thank you so much to everyone who has already begun to pay for camp and specialist fees. This is very much appreciated. Please find more information about these payments below.

## Camp

All students will go to camp this term at Ngatuhua Lodge. The cost per student is \$130.00. While this is a voluntary donation we do ask that you pay this as the cost for camp far outways the funding we receive.

In past years, the vast majority of our parents have paid the camp donation. This has allowed the school to continue to offer camps which our students thoroughly enjoy and which enrich our local curriculum. Without parents financially supporting camps, they will not be able to be offered in future.

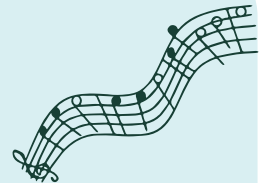


## Specialist Programme

All students will benefit from our specialist programme this year. Subjects are - Hard Materials, Food Technology, Digital Technology, Music, Dance & Drama & Art. All students will experience each specialist subject over the course of the year.

The fee for this is \$40.00. This payment is to cover the cost of the take home/consumable items that the students receive through this programme.

You are more than welcome to set up an automatic payment to cover these costs for this year. Please ensure you put your child's name and what you are paying in the particular and reference fields. If nothing has been referenced we will allocate the funds to the next item owing.



Please make payments to:

Mt Maunganui Intermediate School  
12 3146 0104711 03

Please put your child's name as the reference.

## Accessing the Parent Portal

The parent portal allows you to easily access information about your child. Click [here](#) Parent Portal to find out how to login to this and what information you have access to.

If you have any questions please do not hesitate to email me. Thank you for your support.

Regards

Karen McGovern

[admin@mtint.school.nz](mailto:admin@mtint.school.nz)

# MMI BASKETBALL

## Dear/Kia ora basketball enthusiasts

The 2023 season for basketball is not far away. MMI will be having trials for teams, with more details following.

Please fill out this registration form below if you would like your child to play basketball for MMI this season.



### **When:**

The season is played throughout terms 2 and 3 on Monday nights.

### **Where:**

Trust-power Arena (Baypark)

### **Trials:**

These are ONLY for students who would like to trial for the MMI top teams. All other students who wish to play socially or for development can be placed in teams with their friends are not required to trial.

Trials are to be held at Mount Sports Centre (next to the netball pavilion at Blake Park). We will have a variety of selectors at this trial. Trials will be held on weeks 6 and 7, we also have week 8 available if required.

**First trial: Wednesday 8th March from 3:30pm to 5:30pm**

**Second trial: Wednesday 15th March from 3:30pm to 5:30pm**

Students need to have their MMI PE gear and correct footwear, please bring a drink and snack along too. It is important that students turn up to both trials - if they are at camp they will be excused from one.

### **Subs:**

Estimated to be \$140 per player. This will need to be paid once we have finalised costs.

### **Registration deadline:**

Friday 24th February (No late registrations will be accepted).

Please complete this google form: [MMI Basketball registration 2023](#)



# POIPOIA TE KĀKANO KIA PUĀWAI

Nurture the seed and it will blossom

KIA MAUAO TE TŪ



MOUNT MAUNGANUI  
INTERMEDIATE

## USEFUL INFORMATION

### TERM DATES

Term 1 – 31 January to 6 April  
Term 2 – 24 April to 30 June  
Term 3 – 17 July to 22 September  
Term 4 – 9 October to TBC

#### TEACHER ONLY DAYS:

- 2 March - Paid Union Half Day
- 6 April - Full Teacher Only Day

### MEDICATION

If your child has a severe medical condition or needs to take medication at school please contact the office at: [office@mtint.school.nz](mailto:office@mtint.school.nz)

### SCHOOL DROP OFF

These are NOT drop off zones:

- Lodge Avenue Staff Carpark
- Lodge Avenue Turn Around
- The Bus Bay on Links Avenue

This is for the safety of your children, when dropping off or picking them up. Please refrain from entering and parking in these areas.

### CHANGE OF DETAILS

It would greatly assist us if you could please advise the office if you have any changes of address, phone numbers, email addresses and emergency contact details. In the event of an emergency, sickness or injury we need to be able to contact someone who can collect your child.

Please email the office at [office@mtint.school.nz](mailto:office@mtint.school.nz)

### KEY LINKS

- ✓ [ABSENTEES](#)
- ✓ [BELL TIMES](#)
- ✓ [BUS INFORMATION](#)
- ✓ [ONLINE PAYMENTS](#)
- ✓ [ORDERING LUNCHES](#)
- ✓ [PARENT PORTAL](#)
- ✓ [SCHOOL UNIFORM](#)



## COMMUNICATION

Checkout out our website, newsletters, daily notices and Facebook links.

<https://mtint.school.nz/>

<https://mtint.school.nz/mmi-daily-notices/>

<https://www.facebook.com/Mtint.school.nz/>

<https://mtint.school.nz/newsletters/>

## MMI COASTAL VALUES



**AKO**

MMI students are active learners



**MANAAKI**

MMI students show aroha, respect and mana



**PONO**

MMI students act with integrity, pride and honesty



**TUAKIRI**

MMI students know their identity

## COASTAL VALUE CERTIFICATES 2023 Term 1 – Week 3

1	Mella Brunskill	For showing courage and optimism as you settle into MMI. Your positive attitude and friendly nature makes the transition a smooth one. Kei reira katoa!
4	Joel Chiplin	For the way you have settled into Whānau 4. You are focussed and a positive team player. He whetū koe!
5	Zara Burch	For your active leadership and mentoring approach earning the classroom councillor position. You have made such a great positive start to the year! Ka pai, Zara!
6	Quinn Murdoch	For showing Ako by actively participating in learning and physical education. He whetū koe!
7	Maia-Rose Courtney	For stepping up as Year 8, by guiding the new Year 7's, especially with the daily mihimihi. You have demonstrated super leadership skills. Ka pai hoki koe!
8	Belle Ririnui	For being a bundle of pure awesomeness in class! You have been a superb support for the Year 7's and a fabulous international buddy for our Japanese students. Well done on a great start to the year.
9	Levi Catley	For a positive attitude and resilience. You were a supportive team member at camp and showed kindness to all. It is wonderful to have you join whānau 9 this year!
10	Paige Ramshaw	For your awesome attitude at camp. You did all the activities, followed instructions and supported your peers really well. Ka pai Paige!
11	Arama Te Whetu	For stepping up as a leader and for the focus and involvement shown in your learning. Kei te whakahihi au ki a koe!
12	Hailey Lau	For being the student that always seems to be on task and completing her work to a high standard and always taking pride in everything that she does.
13	Jihyo Kim	You have made an impressive start to life here at MMI. You are keen to be involved, take risks, ask questions and are more than happy to help around our classroom. Mahi pai - well done! 잘해
14	Hikaru Kawai	It is impressive how much more you have challenged yourself to be a risk taker and to get involved in so many more activities. This is wonderful to see.
15	Jade Egan Powell	For a great start at MMI. You have settled in well and demonstrating Manaaki and Pono. You are a role model for others. Kei runga noa atu koe! You are Awesome! 🥰



## COASTAL VALUE CERTIFICATES 2023 Term 1 – Week 3

<b>16</b>	<b>Ashton Mitford-Burgess</b>	For settling in to intermediate school life with ease. You give everything a go with such a positive attitude. Ka pai Ashton, keep it up!
<b>17</b>	<b>Matthias Anderson</b>	For showing Manaaki in offering his time to help immerse our Japanese peers in the life of a New Zealand school. Kei te whakahihī au ki a koe!
<b>18</b>	<b>Sam Stockman</b>	I am really impressed with how much you have risen to challenges and put yourself forward this year. I love your positive attitude.
<b>19</b>	<b>Shelby Nortje</b>	For showing Ako by actively participating in learning and contributing to class discussions.
<b>20</b>	<b>Seth Crosby</b>	Well done on an absolutely great start at MMI Seth. You are showing our AMPT Coastal Values as you are focused on your learning, self managed and respectful. Mīharo Seth!
<b>21</b>	<b>Knox Meade</b>	For a wonderful start at MMI. You give everything your best effort and consistently demonstrate all of our AMPT values. Kei runga noa atu koe!
<b>23</b>	<b>Darius Edmonds</b>	I ngana koe ki te tū rangatira i tō ake ao Māori. Ka wani kē koe!
<b>24</b>	<b>Kingi Mortell</b>	You've shown perseverance and dedication to complete your mahi this week e hoa. Ka wani kē koe!
<b>25</b>	<b>Lucas Mitchell</b>	For an AMAZING start to this year. You are showing great independence and are prepared for learning. Keep it up!
<b>Digi Tech</b>	<b>Lucian Farrelly Whānau 17</b>	For showing resilience and working hard to complete your learning to a high standard. Keep it up Lucian!
<b>Dance &amp; Drama</b>	<b>Kingston Mortel Whānau 24</b>	Demonstrating ako in participating in all areas of learning in dance and drama and manaaki in supporting your peers performances with respect and aroha. You lead by example Kingston, ka rawe!
<b>Food Tech</b>	<b>Tahliah Murray Whānau 23</b>	For demonstrating great tuakana-teina during Specialist Class. This really is our new MMI vision in action. Mahi Pai Tahliah!
<b>Music</b>	<b>Vitek Spinka Whānau 18</b>	Mā te kimi ka kite, Mā te kite ka mōhio, Mā te mōhio ka mārāmaSeek and discover. Discover and know. Know and become enlightened.  You have demonstrated true Ako this week by taking your opportunities in class discussions. Your courage to share your perspectives and understandings builds confidence, and encourages others to share their views.
<b>Visual Arts</b>	<b>Jazzy Kelly Whānau 21</b>	For a conscientious and positive attitude and your helpfulness in class was much appreciated, thank you!!
<b>Hard Materials</b>	<b>Harry Lorentsson Whānau 15</b>	For a conscientious and positive attitude to your learning.





## COMMUNITY NOTICES



### TRIPLE P-POSITIVE PARENTING PROGRAM

Triple P positive parenting program FREE for parents, whanau caregivers with children aged up to 16yrs.

To find out more information please contact Ardell on 0273112140 or 07 571 0144 or visit [www.triplep-parenting.net](http://www.triplep-parenting.net).



11-17yrs FEB 27TH - APRIL 6th 6 wks \$150.00

MONDAY 4pm - 5.15pm or THURSDAY 4.15pm - 5.30pm

THEME - POWERFUL WORDS IN A LANDSCAPE

Landscape painting piece with pastel overlay.

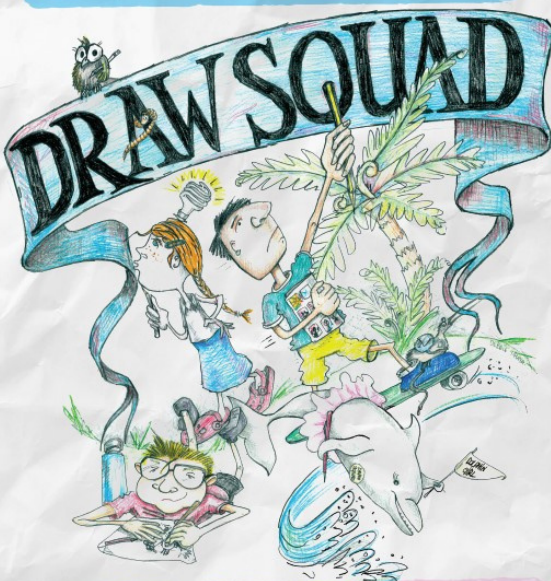
[jacquivandenbergartist@gmail.com](mailto:jacquivandenbergartist@gmail.com) 0210696555

[www.mountwildheart.co.nz](http://www.mountwildheart.co.nz)



## COMMUNITY NOTICES

Fun drawing activities for keen artists and doodlers of all abilities!




**Greerton Library**  
2nd and 4th Wednesday of  
each month from 3.30-4.30pm

**Pāpāmoa Library**  
2nd and 4th Wednesday of  
each month from 3.30-4.30pm

**Mount Library**  
2nd and 4th Thursday of  
each month from 3.30-4.30pm

Registration required. Please visit  
[www.library.tauranga.govt.nz](http://www.library.tauranga.govt.nz) to book your spot.



**GIVE IT A  
GO!  
GET WET**

**CANOE  
SLALOM**



**MARCH  
4TH  
2 - 4 PM**

**WAIMARINO WATER PARK**  
36 Taniwha Place, Bethlehem



(walk to the end of the park  
and look for the kayaks)



FOR MORE INFO OR TO BOOK SCAN QR CODE OR CONTACT NICO ON 022 070 0817  
EMAIL [COACHNICO@CANOESLALOMBOP.CO.NZ](mailto:COACHNICO@CANOESLALOMBOP.CO.NZ)



# Coaching Passport



### Kia ora coaches

The Development Coach Advance (DCA) course is back for another year. This 7 session, 9 month course provides community coaches with a cross-code learning opportunity to upskill and develop in their coaching practice. It aims to build a foundation where coaches are continuous learners, share their insights and thus build a community of support for coaches in the Bay of Plenty.

If this sounds like something you are interested in there is more info, the registration link and the itinerary on our website here <https://www.sportbop.co.nz/community-sport/coach-development/development-coach-advance/>

We look forward to seeing you on the journey.





## COMMUNITY NOTICES

AGES 9 TO 18

### CODING LESSONS



CODINGNZ

#### Coding NZ Lessons

- Learn coding languages to create technology.
- An expert tutor is online to help during lessons.
- 1 hour per week at 4pm, 5pm or 6pm weekdays.
- Try a free trial lesson at [codingnz.com](https://codingnz.com)

### COMPUTER/MOBILE CODING



#### A BRIGHT FUTURE

Our lessons will expand your child's horizons. Your child will learn to not only passively consume technology, but to create technology so that they can be an active part of the digital era. Learning to code is great for student's brains as it develops regions of the brain associated with both math and language. Children have an amazing capacity for learning and introducing them to coding while they're young will help set them up for success in our increasingly digital world.

#### APPLY NOW (Free Trial Lessons Available)

To give your child the opportunity to learn how to program technology apply now at [codingnz.com/signup](https://codingnz.com/signup)

#### WHO

Students aged 9 to 18

#### WHAT

Beginner and advanced coding lessons where students learn to create technology

#### WHEN & WHERE

Online at home  
One hour per week  
4pm, 5pm, or 6pm weekdays



[codingnz.com](https://codingnz.com)

### Grom Squad After School Surf Program



5 & 10 Week Program - Ages 7 - 15 yrs  
Ideal for beginners and up

1.5 hr lessons  
Monday, Thursday, Saturdays  
Terms 1, 2 & 4

Mondays & Thursday - 4 - 5.30pm  
Saturdays - 9am - 10.30am, 11am - 12.30pm

- Qualified and experienced instructors
  - 4 to 6 students per instructor
    - Nationally accredited
    - Award winning surf school



For information and bookings visit  
[www.surfschool.co.nz](https://www.surfschool.co.nz)  
Or call 027 279 9687

## PIANO LESSONS

Tune In

Beginner piano lessons

First lesson free

Crane St, Mt Maunganui

Contact Rachel: [hello@tunein.co.nz](mailto:hello@tunein.co.nz)

027 856 8324





## COMMUNITY NOTICES

**QUAD & BLADE**

# VERT CHAMPS



**SAT 25 FEB 2023**  
**FROM 10AM - BLAKE PARK, MOUNT MAUNGANUI**

Categories include: Junior Quads • Junior Blades  
Open Quads • Open Blades • Doubles  
Prizes for Best Trick, Biggest Air, Best Run & more!

For more info or to enter, visit  
[facebook.com/letsrollcoaching](https://facebook.com/letsrollcoaching)



**SIGN UP FOR  
2023 NOW**

Find out more: 021-182-8185  
[adam@moneillymusic.com](mailto:adam@moneillymusic.com)  
or talk to your music teacher

# Want to learn guitar?



**moneilly music** Limited spots available



**THE  
ATHLETE FACTORY**  
NEW ZEALAND

