

19 June 2026

Pānui

MMI Newsletter No. 9



COMING EVENTS

JUNE

- 16-26 Japan Trip 2026
- 19 WBOP ARGOS Gym
- 25 PSG Juicie Sale
- 26 S11 Indoor Bowls

JULY

- 1-5 Tai Mitchell Tournament
- 1-2 Parent/Teacher Conferences - 3-7PM
- 3 End of Term 2
- 20 Start of Term 3
- 24 S11 Basketball - Rotorua
- 28 Tough guy/girl Challenge
- 29 MMI Choir - Tauranga Primary School
- 30 Tim Sonderer Waterpolo Tournament

AUGUST

- 7 S11 Cross Country
- 10-11 Dance NZ Made
- 12 WBOP Netball Tournament
- 13 Rugby Billets arrive - Gisborne
- 14 S11 Rugby - Girls/Boys
- 14 WBOP Squash
- 21 Teacher Only Day

Term 2 Week 8/9

IN THIS ISSUE

From the Principal Showquest

TOI - Wearable Arts

Coastal Values

School Information

- School Interviews
- Bookfair
- PSG - Juicie Day
- Hero
- EzLunch
- ICAS
- PIPS
- Appreciation Posts

Sports

- AIMS
- S11 Rock climbing

Mount College Enrolments

Public Health Notice

Sponsors Noticeboard

Community Sports

Community Noticeboard

School Holiday Programmes

Useful Information



TOI

'Star of the Night'

awarded to

Charlotte Taylor-Kafka
'Past and Future'



MOUNT MAUNGANUI
INTERMEDIATE

MMI COASTAL VALUES



AKO
MMI students are active learners



MANAAKI
MMI students show awhiri, respect and mana



PONO
MMI students act with integrity, pride and honesty



TUAKIRI
MMI students know their identity



07 575 5512



admin@mtint.school.nz



MOUNT MAUNGANUI
INTERMEDIATE



FROM THE PRINCIPAL

Kia ora koutou

It is scary to think we are now at the end of Week 9 - this term has certainly flown. A huge well done to all the students who have been jumping in, putting themselves out there, and getting involved in everything on offer at MMI.

Showquest and Wearable Arts

Our amazing Showquest group competed in the Bay of Plenty final this week and achieved a fantastic second place! A huge congratulations to the students for their hard work, talent, and creativity on stage. A massive thank you to Ashleen Fahy for organising and leading this group to such a successful result.

Alongside Showquest we also had some incredible success at the Bay of Plenty Wearable Arts competition, with a number of our students placing with their innovative designs. It is wonderful to see their artistic efforts recognised.

Thank you so much to Sally Wylie for all the work she has done to guide and support our students. Check out the full results and pictures later on in this newsletter.

Leadership Camp

Leadership Camp Two weeks ago, our student leaders headed away to the Combined Leadership camp at Ngamawahine. Joining together with student leaders from Tauranga Intermediate, Whakatane Intermediate, and Katikati College, they experienced three full-on days focused on leadership growth and being pushed outside of their comfort zones.



Hero Comms

As you know, we recently transitioned our school SMS and communication service to Hero. While we work through a few initial transition hiccups, we want to make sure no whānau is missing out on important updates!

To ensure you stay fully connected, please take these two quick steps:

- Download the Hero App: This is our main hub for all school notices and communications. This is also how you will access your child's upcoming mid-year report.



Shem Banbury
Deputy Principal



- Check your Email Spam Folder: Sometimes our emails accidentally end up there. If you find a Hero email in your spam, please mark it as "not spam" or safe.

Thank you so much for your patience and support as we smooth out these final kinks! If you have any concerns or questions, then please let the office know.

Interviews/Conferences

Our mid-year school interviews are coming up. We look forward to connecting with you all. It is our goal to have a family member from every family attend this event. The connections and discussions are important to celebrate successes and set goals for future teaching and learning. Our school interviews, for most classes, are being held on **Wednesday 1 July and Thursday 2 July**. The exception is for rooms 21, 27 & 28, who are holding their interviews next term on Wednesday 5 August and Thursday 6 August.

You will have received a notification via Hero regarding these dates and how to book your time slot. Students are welcome to wear mufti when they attend their interview with you.

Bake Sale

Thanks so much for your contributions to the bake sale, the selection of baking was awesome and it is always a popular event with the students. The PSG were able to raise \$833 which is greatly appreciated. At their next meeting they will be deciding how to use this to benefit the students at our kura.

Statistics Snapshot Results

The Mathematics focus for Term 2 was on 'Statistics'. Students completed a snapshot at the beginning of the term. This information enabled teachers to find aspects that they could target during the teaching and learning for the term. We have spent half of the term learning about aspects such as collecting, displaying and interpreting data. We then completed a similar snapshot to see how much progress each student had made.

As a staff, we intentionally focus on using data to inform our teaching. We will use this data to further identify areas that we need to focus on to ensure our learners reach their potential.

In term 3 we will have a whole school focus on Rational Numbers (Fractions, Decimals and Percents) and we look forward to seeing the progress that students will undoubtedly make during this unit of work.

| Effect Size | |
|-------------|---|
| Under 0.2 | No educational shift or impact |
| 0.2 - 0.4 | Small, but educationally significant impact |
| 0.4 - 0.6 | Medium educationally significant impact |
| Above 0.6 | Large educationally significant impact |

| Overall Group Effect Size | | | |
|---------------------------|-----|-----|-------------------|
| | SOT | EOT | Effect Size Group |
| Average | 25% | 63% | 2.03 |

Have a great weekend everyone
Shem Banbury

SHOWQUEST



On Tuesday 16th June, 62 of our MMI students performed at the regional Bay of Plenty Showquest event along with the help of our two lighting designers and two backstage crew. It was a big day, full of dress rehearsing, silent disco-ing and preparing for the evening's performance.



Leading up to this performance day, students showed amazing leadership and creativity. Alongside teacher Miss Fahy, a number of students stepped into the role of choreographer for their groups, leading the teaching of dances and the perfecting of our story telling.



RESULTS

★ 2nd Place ★

Excellence in: Technology (Video Wall)
Recognition in: Dance, and Drama



TOI - WEARABLE ARTS



A HUGE congratulations to all our students who entered TOI - Wearable Arts this year.

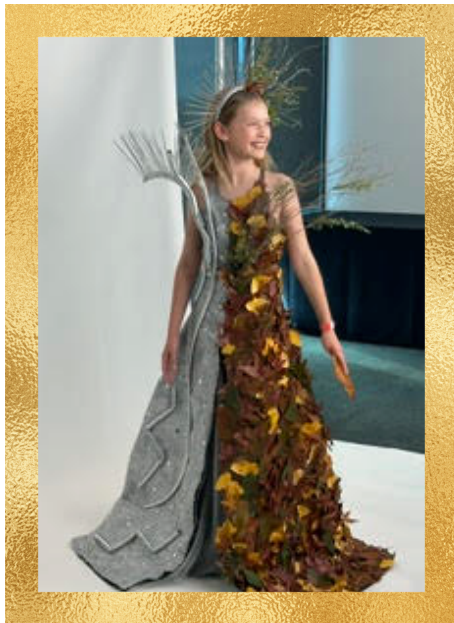
This event was held at Baypark on Tuesday 16th June along with Showquest.

The 16 garments (26 students involved) were absolutely incredible, and it was amazing to finally see them come to life on stage! The creativity, dedication, and hard work truly stood out and we were incredibly proud of what was achieved.

Amazing results in which we received 9 awards and also won 'Star of the Night'.

To make it into the TOI Showcase this year was an outstanding achievement due to the changes implemented and going through a pre-selection first. There were over 900 registrations nationwide.

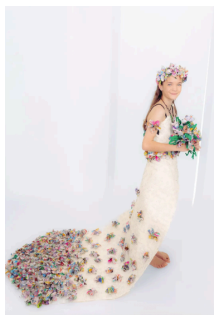
A huge thanks to the parents for your support and encouragement from the early preparation stages right through to the actual evening event.



'Star of the Night'
Charlotte Taylor-Kafka
'Past and Future'



Octopus Illusion



Petal Pages



Sea to Believe



Red, Radiant and Real



The Polpetta wears pasta

MMI COASTAL VALUES



AKO

MMI students are active learners



MANAAKI

MMI students show aroha, respect and mana



PONO

MMI students act with integrity, pride and honesty



TUAKIRI

MMI students know their identity

COASTAL VALUE CERTIFICATES 2026 Term 2 – Week 8/9

| | | | | | |
|----|----------------------------|---|----|------------------------------|---|
| 1 | Hamin Bang | For always being a focus learning with outstanding results! Keep giving 100% all you do in class and in your sports. | 1 | Polly Blair | For improved results with your snapshots and for having a positive attitude to all tasks. |
| 3 | Minseok Song | For being a great asset to the class. Consistently showing the Coastal Values and being a great role model. | 3 | Ollie Ryan | For making accelerated growth in his 'Sentence Structure and Punctuation' snapshot assessment. He made the largest improvement in the class! |
| 4 | Phoebe Stefan | Congratulations on your incredible results for Sentence Structure and Statistics. You always give 100% in all you do. You are a star! | 4 | Alexis Gibson | For being considerate and kind to your class members, showing Ako towards your learning and always striving for excellence. |
| 5 | Toby Chisholm | You bring a positive attitude to every lesson. Persevering & asking relevant questions no matter how difficult the task. You take whatever your working on and turn it into a goal for yourself, pushing yourself & growing each day. | 5 | | |
| 6 | Telio Fromont | For consistently being focused and positive in the classroom, you are a valued member of Whānau 6! He whetū koe! You are a star! | 6 | Elton Zhou | For always being a focused learner and having a positive attitude towards all your learning! He whetū koe! |
| 7 | Asha Heke | For displaying the Coastal Values, Ako and Tuakiri, by persevering in maths and sharing your answers. Your confidence is growing daily! Miharo! | 7 | Cove Dickens | For demonstrating the Coastal Value, Ako, by being focused and positive with your learning. Ka pai tō mahi! |
| 8 | Oliver Smith | For showing a positive, can-do attitude and consistently engaging more in learning. Your effort, participation, and willingness to give things a go make a real difference. Keep it up! | 8 | Ben Callendar | For showing Pono for others and supporting relief teachers when Miss Sanson was away. People admire your kindness and the way you respect your peers. Tino pai. |
| 9 | Angus Graham | For being a studious, driven and creative learner in Whānau 9. Te koi hoki o tō pinati! | 9 | Aurora Maguire | For having a positive attitude towards your learning. Keep up the solid effort! Te mutunga mai o te pai. |
| 10 | Maia Scott-Simmonds | For your fantastic attitude towards your peers and learning. Your positive use of Ako was reflected in your great snapshot results. Ka pai tō mahi, Maia. | 10 | Kaia Gee | For showing strong leadership, responsibility and pono with a smile on your face. You are an inspiration for all, Kaia. He whetū koe! |
| 11 | Mason Thurston | For being a reliable, creative, honest, caring and dedicated learner and leader. You are an inspiration, Mason. | 11 | Aedan Nally | For locking into learning and challenging your first attempt. Keep striving to the best you can be. He whetū koe! |
| 12 | Emily Hyatt | For your amazing improvement in your learning and snapshots, and for being a role model in class. He whetū koe! You are a star! ★ | 12 | Violette Thiel-Lardon | For your improvements in all your snapshots, and for your effort and determination in the Arunga Touch class team. Tino pai tō mahi! |
| 13 | Lily Cowdrey | For working hard to understand new concepts in Maths and Writing. You are a great role model for others and share your ideas willingly. Ka rawe! | 13 | Arlo Anderson | For challenging yourself and others during Maths time. It is really awesome to hear your thinking and justifications. Ka rawe! |
| 15 | Charlotte Worth | For outstanding progress in your Writing Snapshot, showing excellent focus and effort in your learning throughout the term. | 15 | Truse Matekeua | For your improved focus, positive effort, and active engagement in learning. It has been awesome to see your progress! |

COASTAL VALUE CERTIFICATES 2026 Term 2 – Week 8/9

| | | | | | |
|-----------------------|------------------------------------|---|-----------------------|------------------------------|--|
| 16 | Cooper Young | For always sharing your great ideas and math knowledge with the class. Keep it up! | 16 | Max Pease | For applying your knowledge of sentence structure and punctuation, your snapshot showed fantastic improvement. Keep up the great work! |
| 17 | | | 17 | Sid Rebele | For being such an awesome, fun and engaged member of Whānau 17. You always bring positive energy and keep us all on our toes. You will be so missed, we wish you all the best! |
| 18 | | | 18 | Amelia Beyer | For consistent hard work and excellent progress in your writing snapshot. Tino pai tō mahi! |
| 20 | Levi Sach | For your amazing effort in Literacy! You have taken real pride in your learning; it has been so awesome to see! | 20 | Logan Hemingway | For your amazing progress in your writing snapshot thanks to your listening and focus. Ka rawe! |
| 21 | Millie Woods | For an outstanding improvement in writing this term, particularly in sentence structure and punctuation. Your consistent dedication to improve is to be commended! Well done. | 21 | Sarah Vu | For your tenacity and teamwork particularly in sports and P.E. You are a fantastic role model to your peers in all learning areas. |
| 24 | Molly Goodchild | For making an outstanding improvement in your Sentence Structure and Punctuation snapshot. | 24 | Mya Hislop | For consistently maintaining a high standard of presentation in all your work. Tino pai tō mahi! |
| 27 | Phloem Werohia | For showing mana, pono (integrity) and tuakiri (identity) during all aspects of te ao Māori, especially during waiata and whaikōrero. | 27 | Arikinui Gate | For showing Ako consistently in class, especially in maths, challenging herself and persevering with difficult learning. Ka mau te wehi! |
| 28 | | | 28 | Wairere Gate | I eke panuku koe i āu na mahi i te wiki nei. Heia tō hei! |
| Digi Tech | Kubi Heller Room 16 | For being an active listener and focused on your learning. You show persistence and care when creating your designs in Tinkercad. | Digi Tech | Cody Mason Whānau 8 | For your enthusiasm and effort in Digital Technology. You created a cool Crazy Sprite project in Scratch! |
| Science | Konah Tyler Whānau 27 | I love your enthusiasm for Science. You are always curious, ready to explore, and do a fantastic job helping with the clean up. Tō kerewa hoki | Science | | |
| Food Tech | Jett Davie Whānau 15 | For great leadership in the kitchen, always putting his team first to ensure a successful product. | Food Tech | Jett Rhind Whānau 18 | For being a champion focused worker who uses his sharp thinking skills for the benefit of the whole team. |
| Music | Samuel Bloomfield Whānau 14 | For your engagement during digital compositions. Your progress is reflective of lesson focus and asking clarifying questions. Keep it up | Music | | |
| Visual Arts | Millie Woods Room 21 | For always being positive and enthusiastic in class. You consistently give your best effort and strive for personal excellence. | Visual Arts | Awhina O'Brien Room 2 | For your positive and conscientious attitude to everything you do. Love your helpfulness and support of your peers, awesome to see!! |
| Hard Materials | Calayis Shaw Room 25 | For being responsible, staying engaged, and setting a positive example for others. | Hard Materials | Sophia Martin Room 1 | For carefully following instructions and willingly assisting others |

SCHOOL INFORMATION

SCHOOL INTERVIEWS

Our mid-year school Interviews are coming up!

We look forward to connecting with you, as it is our goal to meet with the caregivers of every single student.

Our school interviews, for most classes, are being held on **Wednesday 1 July and Thursday 2 July**. The exception is for rooms 21, 27 & 28, who are holding their interviews next term on **Wednesday 5 August and Thursday 6 August**.

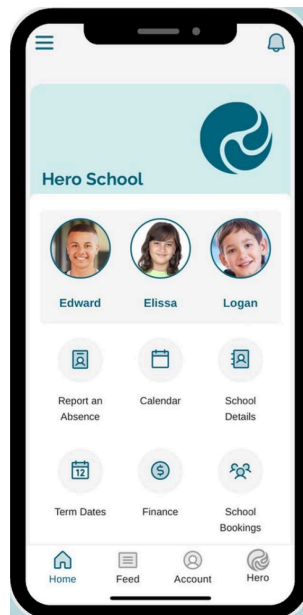
You will have received a notification via Hero regarding these dates and how to book your time slot.

Students are welcome to wear mufti when they attend their interview with you.

The book fair is running in the library during the conferences. Poster on the next page.

We look forward to seeing you all then!

Find **School Bookings**
on the home page in
your Hero App



SCHOOL INFORMATION

BOOK FAIR



Week 11

29th June - 2nd July



THE BOOK FAIR



Mon- Wed 8.45am-2.30pm

Late night

Wed and Thurs

2.45-6.45pm

**Come and have a browse
before your interview**

(Dinner break 5.30pm)





JUICIE DAY

**THURSDAY
25TH
JUNE**

\$2

ON THE TURF AT LUNCHTIME

 MOUNT MAUNGANUI
INTERMEDIATE

The background features a vibrant, multi-colored gradient (purple, blue, pink, orange) with abstract light patterns. Several pieces of yellow melon are scattered across the center. On the left and right sides, there are vertical strips of small, colorful rectangular icons, likely representing different menu items or activities.

SCHOOL INFORMATION

HERO

Moving to Hero: Our New Learning & Communication Hub

We are excited to share that we have successfully moved to the **Hero Student Management System**.

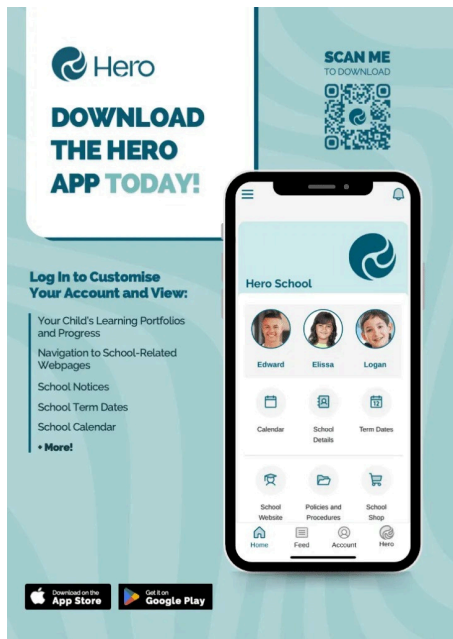
Hero is a secure, all-in-one platform designed to simplify school communication and bring your child's learning journey to life.

Please visit our website to get all the information that you need-
<https://mtint.school.nz/hero-2/>

Why Hero?

Hero allows us to share content with you in real-time, anywhere, on any device. By moving to this platform, we can provide you with a single "hub" for all school-related information.

Through Hero, you can easily view your child's learning progress, keep up with school notices and events, and handle practical tasks like reporting absences or booking interviews.



Next Step: Download the App

To stay connected and receive instant notifications, we encourage all families to download the "Hero by LINC-ED" app.

- **Download:** Find it on the [App Store](#) or [Google Play](#).
- **Log In:** Select "New User" and enter the email address you have provided to the school office.
- **Verify:** Follow the link sent to your inbox to set your password.

Need help getting started? You can find a step-by-step walkthrough in the Hero [Parent Guide](#). If you have any trouble logging in, please contact **Shem Banbury** at s.banbury@mtint.school.nz

Reporting an Absence

Report an Absence

Please use one of the following to report an absentee.

Text Only

027 232 0446

Email

absentees@mtint.school.nz

PHONE

07 575 5512
option 1

Hero App

download the HERO App
from your iphone APP store
or android PLAY store.

SCHOOL INFORMATION

ezlunch



Search for:
**Mt Maunganui
Intermediate**

Healthy Lunches. Loved by Kids.

Ezlunch makes school lunches simple and stress-free.

Enjoy tasty meals fresh each day while supporting local cafes and caterers.

Order anytime, anywhere - no more morning lunchbox scrambles!



New to Ezlunch and Kindo?

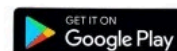
- Create your account at mykindo.co.nz
- Select your school and add your child
- Start ordering lunches!

Already use Kindo?

- Log in at shop.kindo.co.nz
- Click "Switch schools" to add your current school
- Add your child under "my details" > "add member"
- Place your lunch orders!

Order cut-off times vary by lunch provider, so check your school's Ezlunch menu online for full details.

Let's fuel your kids
the **easy way!**
Order your school
lunches today via
eatlunch



Have questions? Visit support.mykindo.co.nz
or hello@mykindo.co.nz or 0508 454 636. Monday to Friday 8am - 4pm.

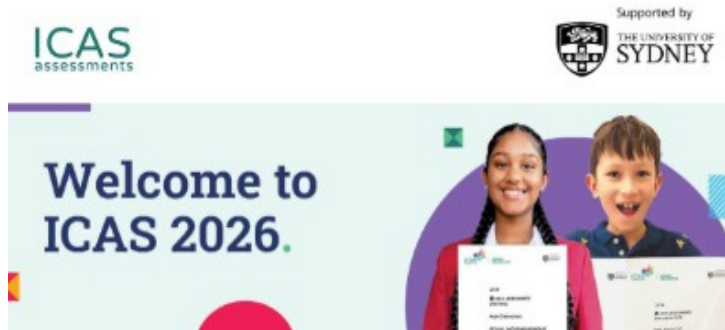
See the [Lunch Orders page](#) on our school website for more info

SCHOOL INFORMATION

ICAS

Academic Competitions 2026: ICAS & KIWI Competitions Now Open

Registration is now open for students looking to challenge themselves through the ICAS and KIWI academic competitions! These assessments offer a fantastic platform for students to test their higher-order thinking skills and celebrate academic achievement.



- **ICAS Assessments:** A globally recognised competition designed by experts to stretch students across various subjects using complex problem-solving.



- **KIWI Competitions:** Developed by the University of Canterbury, these tests allow students to benchmark their skills within a New Zealand context.

Please note that these competitions are not compulsory and are user-pays. All testing is conducted online during school hours. If your child would like to participate, please ensure you register via the links below before the closing dates:

- **KIWI (English, Math, Science):** Entries close **1st May** – [CLICK HERE](#)
- **ICAS Assessments:** Entries close **27th July** – [CLICK HERE](#)



SCHOOL INFORMATION

PIPS



Your in school māra kai and environmental programme needs support

You may have seen the article in Sunlive and The Weekend Sun around PIPS having a funding shortfall.

Without additional financial support, PIPS may not be able to continue long term - which would be a huge loss for the many schools, tamariki and communities we work alongside.

PIPS has been blown away by the support of our kura, who are supporting us through this term so we can continue to deliver our programme to your tamariki.

However, this support is only helping us bridge the gap temporarily.

We are now actively seeking:

- Sponsorship
- Funding partners
- Donations
- Community and Business support

If you or your business may be able to help, or know someone who can, please reach out. Every conservation, connection and contribution makes a difference.

You may be only able to give a little - it costs PIPS \$80 a year per child for us to run the programme, even the smallest amount can make a big difference in some tamariki life.

Together, we hope we can keep PIPS alive for our tamariki and future generations.

More information:

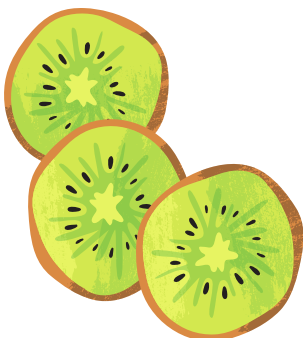
www.pipsbop.org/donations or admin@pipsbop.org

APPRECIATION POSTS



Thank you so much for participating in our Schools' Appeal this year. Our school collected 150 items! That is so awesome!

Without donations like these, we would struggle to provide groceries to those who need it most, so again, Thank you from the bottom of our hearts!



THANK YOU FOR THE KIWIFRUIT

We have been lucky enough to have more Kiwifruit donated from one of our parents.

We know our students really enjoyed them!

Thanks to the Kiwifruit Breeding Centre.

We really appreciate it!

SPORTS



AIMS

With AIMS fast approaching, we would like to share some important information and reminders.

Registrations Closed

All AIMS registrations have now closed. Participation costs will be charged to your school account and are required to be paid by **21 August**.

If your child withdraws from AIMS from this point onwards, a refund can only be issued if a replacement participant can be found. Unfortunately, AIMS does not provide refunds once entries have been submitted.

Opening Ceremony

The cost of your child's Opening Ceremony ticket is included in the AIMS fees paid to the school. Tickets will be distributed through your Teacher in Charge (TIC) during the week prior to AIMS.

Arrival Time: 6:20pm on Sunday (meet at designated area as advised by TIC). **Teams:** MMI students will be grouped together.

Parents, coaches, managers and supporters wishing to attend the Opening Ceremony will need to purchase their own tickets. Ticket sales open on **Monday 3 August**. Please note that tickets sold out very quickly in 2025, so we encourage you to purchase early if you wish to attend.

All Mount Maunganui Intermediate students will be attending the **7.00pm** show. The Green Team may attend the afternoon session - This is yet to be confirmed.

Training Expectations

Attendance at all trainings is expected. If a student is injured, we encourage them to continue attending training where possible so they can remain involved with the team and stay informed.

If your child is unwell, please keep them home and notify the coach or manager. This helps keep everyone healthy leading into the tournament.

Required Forms

AIMS will send out two forms that must be completed:

- Media Release Form
- Medical Information Form

These forms are compulsory. If they are not completed, your child will not be eligible to participate in AIMS Games.

Venue Information

For full venue details, schedules, and updates, please visit the official AIMS Games website:

[AIMS Games website.](#)

Questions?

Your child's Teacher in Charge (TIC) should be your first point of contact for any sport-specific questions. The AIMS website is also a great source of information and can help answer many common questions as we work our way towards tournament week.

- Nicola Logan

SPORTS

S11 ROCK CLIMBING

S11 Rock Climbing - Scaling to New Heights!

On Friday 12th June, 9 MMI Rock Climbers braved -1 degree temperatures and travelled down to the Taupo Events Centre to compete in the highly anticipated S11 Rock Climbing competition.

The colour coded walls provided a demanding challenge for the day ahead. From shaking limbs, sore fingertips, strapped-up ankles, to pinched toes in climbing shoes slight too small due to a recent growth spurt - our climbers pushed past the pain to give it their all.

Facing fierce competition from across the region, the MMI team showed incredible grit, agility and sportsmanship. Every student participated in two intense scoring

climbs to contribute to our overall team points, with some even making the thrilling final rounds for the individual titles.

And boy, did that effort pay off! Our rock climbing squad absolutely smashed it on the wall. They pushed through their physical limits and brought home a spectacular haul of medals and titles. Congratulations to all of our competitors for representing MMI so proudly. A special shout-out to our Podium winners:

- **Trixie de Jong:** 1st Place - Year 7 Girls 🏆
- **Sebastian Farrar:** 2nd Place - Year 8 Boys 🥈 & Table Challenge Winner! 🏆
- **Izac Vane:** 3rd Place - Year 8 Boys 🥉

We did exceptionally well in our team placements as well:

- **Year 7 Girls Team - Indy Craven-Myrphy, Trixie de Jong, Robyn Parchomchuk:** 3rd Place Overall 🥉
- **Year 8 Boys Team - Sebastian Farrar, Dominic Quellin, Izac Vane:** Overall Champions 🥇
- **Overall Top School - 2nd Place** 🥈

An event like this wouldn't be possible without the incredible support of our community. A huge thank you to the parents who volunteered their time to drive, support and cheer our team from the sidelines. You rock!



MOUNT COLLEGE - ENROLMENT/OPEN EVENING



MOUNT MAUNGANUI COLLEGE
1962-2022



Fletcher Cameron
Ava Jurisich
2026 Head Students

OPEN EVENING 2027 ENROLMENT

Wednesday 5 August 2026
4pm - 5:30pm OR 5:30pm - 7pm

YEAR 9 ENROLMENT PROCESS

Mount Maunganui College operates an enrolment scheme. An enrolment at Mount Maunganui Intermediate does not give you the right to enter into the college; you will need to live in the Mount Maunganui College school zone to enrol as 'in-zone'.

20 July

Enrolment details and prospectus issued to students. Details on specialist classes are available on the college website.

5 August

Open Evening and tour of the college. Mount Maunganui College hall 4pm to 5:30pm OR 5:30pm to 7pm.

7 August

In-zone and out-of-zone applications open. Parents / caregivers can complete an enrolment form online on Mount Maunganui College's website.

12 August - Mount Maunganui Intermediate

An optional enrolment appointment can be held in the library at Mount Maunganui Intermediate for in-zone Mount Maunganui Intermediate students by contacting Mount Maunganui College. Please ensure you bring your enrolment form if you have not already completed this online or handed it to the Mount Maunganui Intermediate school office.

28 August

Out-of-zone **applications close**.

28 August

In-zone applications to be submitted.

9 September

Out-of-zone ballot.

23 October

Mauao Athlete Pathways, Design Learning, Elite Performing Arts classes, Enrichment register applications close.

6 November

Mauao Athlete Pathways practical testing day.
Elite Performing Arts audition.

December

Distribution of Year 9 information booklet to new Year 9 families.

"Mā tā rourou, mā tāku rourou, ka ora ai te iwi"
Together as learners, we are inspired to grow

07 575 3096 principal@mmc.school.nz
www.mmc.school.nz

PUBLIC HEALTH NOTICE

We are seeing a significant increase in cases of **scabies** in our community. We ask school and families to be aware of the signs and symptoms so cases can be identified and treated early.

What is scabies?

Scabies is a common, contagious skin condition caused by tiny mites. It spreads easily through close contact with others and is not related to cleanliness.

Symptoms to watch for:

- Intense itching, especially at night.
- A rash (small red bumps, blisters, or thin lines on the skin).
- Common areas affected include between the fingers, wrists, elbows, armpits, waist and groin.

In young children, the rash may also appear on the face, scalp, palms and soles.

What to do if you suspect scabies:

- See your GP, pharmacy or healthcare provider for assessment and treatment.
- Treatment usually involves a cream or lotion.
- **It is very important that everyone in the household (whanau) is treated at the same time - even if they do not have symptoms - to stop the infection spreading back and forth.**
- Wash bedding, clothing and towels used recently in hot wash or bagged up for 3 days.

Treatment available:

From **2 June**, participating local pharmacies are funded under the **Minor Ailments Service**.

If a child is assessed and scabies is confirmed, **treatment for the whole whanau can be provided for a small charge** through these pharmacies. (community services card are charged less).

School attendance:

Children can return to school once treatment has started.

We appreciate your support in helping reduce the spread of scabies in our community. If you have any concerns or questions, please contact your healthcare provider or local pharmacy.



SPONSORS NOTICEBOARD

Early Treatment

Braces

Aligners

PĀRĀMOA ORTHODONTIST

(07) 579 3571

hello@papamoorthodontist.co.nz
1G Tara Road, Papamoa

papamoorthodontist.co.nz





Dr Rachel Farrar BDS DClinDent (Ortho) MRACDS (Orth)

+ Dentist and Hygienist on site

**mount
maunganui** **vets**



Open 6 days 

-  Locally owned and operated for more than 40 years
-  Our newest clinic, conveniently located in Mount Maunganui, provides advanced Veterinary care in our state-of-the-art, custom-built clinic.
-  Best Practice Accredited
-  Cat Friendly Clinic - Silver

Book appointments online at
www.bopvets.co.nz

60 Girven Road
Mount Maunganui
07 242 4422

WWW.MOUNTJIUJITSU.CO.NZ



BECOME A CHAMPION OF LIFE

call 021 0707 630 | email info@mountjiujitsu.co.nz



RoofTek

Got you covered

- New roofs
- Re-roofs
- Roof repairs
- Long-run
- Membranes
- Asphalt shingles

Get in touch today!!

roofteknz@gmail.com


027 3165 613

Quality Showers

Considering a Shower?

Showerman has been Manufacturing & Installing Quality Showers across the BOP & Waikato since 1997.

Let our experienced Team help you find the perfect Shower to fit your Bathroom & Budget.

-   Frameless Glass
-  Acrylic Linings
-  Shower Packs
-  Shower Trays

 **SHOWERMAN**

07 5740310 | admin@showerman.co.nz

79 Newton St, Mt Maunganui

www.showerman.co.nz

WOULD YOU LIKE YOUR ADVERT HERE??

If you would like to become a MMI sponsor and have your advert here there is an annual charge of \$200.00 which gives you advertising for approximately 20 publications per year.

Please contact us at
admin@mtint.school.nz

COMMUNITY - SPORT

SPORTING OPPORTUNITIES

Tauranga Swim School
Your potential, our passion!

TEEN & SQUAD SWIMMING

Whether you're a competitive swimmer or just looking to have fun, join our squad!

Toi Oho Mai
3:00pm-6:30pm

Monday, Wednesday & Thursday



REGISTER NOW

www.taurangaswimschool.co.nz
info@taurnagaswimschool.co.nz



GIRLS GOLF
GOLF NZ



GIRLS GOLF MEET-UPS

A place to connect, grow, and have fun! Our monthly meet-ups are all about making new friends, boosting confidence, and enjoying golf in a relaxed, supportive setting. Whether you're new to the game or already love it, you're welcome to join! Each session features golf games, on-course experiences, social activities, and skill development, making it a fun and easy way to build confidence and enjoy golf with others.

When: Monthly
Where: Various golf clubs, facilities, and locations around the Tauranga region
Who: Girls aged 10-16
Led By: Tania Ellis & Anya Apanui

Come swing, smile, and share the joy of golf with us!
Sign up today
<https://forms.office.com/r/11dPPUgdV2?origin=qrLink>



Time to COLLECT Yummy stickers for our School's share of

\$200,000 SPORTS GEAR

Download extra sticker sheets at yummyfruit.co.nz




EAT YUMMY APPLES & BRING YOUR STICKERS TO SCHOOL!

Register Today!

WINTER HOCKEY DEVELOPMENT

COMMENCING
SUNDAY 7TH JUNE 2026

TRAIN AND UPSKILL WITH SOME OF THE TOP HOCKEY COACHES IN THE BAY OF PLENTY




Scan Me

REGISTER TODAY | LIMITED NUMBERS!
MOANATRUST.ORG.NZ/HOCKEY

COMMUNITY NOTICEBOARD

Dance Music Classes
 dancer.amanda11@gmail.com
 021 0841 0697

RhythmX and Stretche'
\$145 p/term each genre
 (both RhythmX/Stretche' \$200 p/term)

Includes tech classes: TURNE' - LEAPZ
 Mon Tue Wed after school,
 all ages, stages, m/f

Also avail Choir 145/term
Vocal/Guitar coaching \$ 45 p/half hour

VOCAL LESSON GUITAR LESSON KIDS CHOIR ADULTS CHOIR

Oh! Celeste



SIGN UP FOR 2025 NOW
 Limited spots available

Featuring **NEW Online Resources** to assist learning at home

Want to learn guitar?

mcneilly music

Find out more: 021-182-9185
 sidam@mcneillymusic.com
 or talk to your music teacher

MOUNT MUSIC SCHOOL FIND YOUR SOUND

OPENING TERM 3

PIANO GUITAR DRUMS BASS SAXOPHONE VOCALS

- Tailored lessons
- Experienced teachers
- Supportive environment
- Private or group lessons
- Any age, any level



ENROL TODAY www.mountmusicschool.co.nz
 hello@mountmusicschool.co.nz

Adventure awaits at Mauao Scout Group

Scouts (Ages 11-13)
 Mondays 6pm - 8pm

Cubs (Ages 8-10)
 Mondays 6pm - 7:30pm

At Mount Maunganui Scout Hal on May St

For more info, email mauao@group.scouts.nz
<https://scouts.nz/group/mauao-scout-group/>




WIN x4 FREE Friday Night Tickets!

How to enter:

- ✓ Like this post
- ✓ Tag another parent or family

Get your Friday evening sorted - just in time for the school holidays.

- Slides, waves, manus + more. Good vibes only
- Spa pool open from 7pm (11+ only)
- NEW meal deals available - dinner sorted
- Every Friday night at Baywave from 3-7pm
- Prize: 4x Passes to Friday Night Fun (5-15 years)
- Find out more: [Click here](#)

Kaitiaki services **9 Hull Rd Mt Maunganui**
 (Same building as Police Station)

Nurse Clinic

FREE ACC WOUND CARE
 To the patient – No Surcharge
Monday-Wednesday-Friday
9.00am - 4.00pm
 Phone for appointment **07 5710144**
 or Walk'n

Please bring your paperwork from ED or 2nd Ave if you have any.

OR we can start your ACC process for you.

Burns, Skin tears, Grazes, Wounds to any body parts, squashed fingers, toes, Spider bites, Dog bites, Removal Stitches, Removal Clips etc.

NON-ACC WOUND CARE \$30.00

MANU ZONE
HYDROSLIDE
WAVES
SPA ACCESS*
SNACKS**

FRIDAY FUN NIGHT

ONLY \$10 entry

Every Friday 3pm-9pm
 Including school & public holidays



Baywave

SCHOOL HOLIDAY PROGRAMMES

Collab - 26 TAURANGA

the
classical
collab

In the July school holiday's The Classical Collab brings 'Collab-26' to Tauranga dancers. A two day workshop that allows dancers to learn and create new dance pieces under the mentorship of renowned contemporary ballet choreographers and tutors.

Workshop
July 16 - July 17 2026
Arataki Community Centre
Mount Maunganui

The week will culminate with a **live studio performance** allowing the young dancers the opportunity to perform for family and friends.

[apply here](#)



APPLY
theclassicalcollab.co.nz



Up-coming Camps

Outdoors Overnight. EDVENTURE (5 days) CAMP NZ



- ✓ OSCAR Available
- ✓ 7 - 19yr olds
- ✓ Pick ups Ham, Aki, BOP
- ✓ Planned and Run by teachers
- ✓ Limited Spaces
- ✓ \$595, (5 days, 4 nights)

www.edventure.co.nz

021 0224 1576

mark@edventure.co.nz

www.edventure.co.nz

July Edventure - Camp NZ (7-13yr olds)

- based at Ngamuwahine Tauranga,
- Mon 13th - Fri 17th July 2026. \$595 (5 days)
- 50 Spaces available on the bus.
- Pick ups from Hamilton and BOP
- OSCAR available

Saddle Up FOR A SCHOOL HOLIDAY ADVENTURE!

OWN YOUR OWN Pony HOLIDAY PROGRAMME

WHAT'S INCLUDED?

- 🐾 Horse safety and farm skills
- 🧼 Grooming and tacking up horses
- 👥 Learning horse behaviour and communication
- 🏠 Barn duties and horse care
- 🕒 Plenty of riding each day (morning and afternoon sessions)
- 🎮 Fun games, challenges, and activities

Learn. Ride. Care. Have Fun!

PROGRAMME DETAILS

📅 **6 - 17 JULY**

🕒 **9:00AM - 3:00PM**

💰 **\$95 PER DAY**

🏆 **OSCAR APPROVED HOLIDAY PROGRAMME**

✓ Whether your child dreams of owning a pony or simply loves horses, this hands-on programme is the perfect way to spend the school holidays.

NO PONY? NO PROBLEM! HORSES PROVIDED

Includes all activities, tuition and transport to the equestrian school.

BOOK NOW - LIMITED SPACES AVAILABLE!
Don't miss out on this unforgettable holiday experience!

www.taurangadistrict.co.nz/Our-Programmes/Holiday-Programme
for more information and bookings.

Tauranga District
New Zealand's finest for the Holidays

STEPS PERFORMING ARTS

MUSICAL THEATRE HOLIDAY PROGRAMME

DATES: 6 - 9 JULY 2026
TIME: 9.30 AM - 3.30 PM
AGES: 7 - 12 YEARS
COST: \$220
WHERE: TAURANGA CENTRAL

DESCRIPTION:
Join STEPS for a 4 day holiday programme exploring the genres of singing, dance, acting, and performance and gain confidence, have fun and celebrate your uniqueness.

EXPERIENCE LEVEL:
No experience necessary just bring your enthusiasm and imagination

BOOKINGS:
Essential as the programmes do fill up quickly!

Contact STEPS for a booking form and information sheet
0212 744 116

JULY HOLIDAY LESSONS

Accelerate your child's swimming progress

Baywave lessons
run from 6th - 17th July

Greerton lessons
run from 6th - 17th July

- **Group Clinics**
30 minutes for \$20
- **Fast Track 1:1 Lessons**
20 minutes for \$30

Chat with us at reception to find out more.

Book Now
bayswim.co.nz | 07 577 8550

BaySwim
LEARN TO SWIM

LEVEL UP your game during the school holidays

JULY SKILLS CLINICS

2 Weeks | 6 Development Days | 12 Skills Clinics

| | | |
|--|--|--|
| 7th July Skills and Thrills | 8th July Scan and Solve | 9th July Back of the Net |
| 14th July Pass Masters | 15th July Touches and Turns | 16th July Goals and Glory |

Morning Session: 10am - 12pm | Afternoon Session: 1pm - 3pm

Half Day: \$30 | Full Day: \$50 | Promo Rate: 20% OFF*

*PRICES REDUCED BY 20% FOR ALL CLINIC PROMOTION MEMBERS

📍 All Clinics will run at Macville Park, Mount Maunganui

📱 @levelupfootballnz | 📧 alfie@levelupfootballnz.com

Looking to sharpen your game over the school holidays?

Join us for 6 action-packed development days focused on improving technique, confidence and game understanding.

Macville Park, Mount Maunganui

7th - 16th July

Morning and afternoon sessions

POIPOIA TE KĀKANO KIA PUĀWAI

Nurture the seed and it will blossom

KIA MAUAO TE TŪ



MOUNT MAUNGANUI
INTERMEDIATE

USEFUL INFORMATION

TERM DATES

Term 1 – 2 February to 2 April
Term 2 – 20 April to 3 July
Term 3 – 20 July to 25 September
Term 4 – 12 October to 15 December

MEDICATION

If your child has a severe medical condition or needs to take medication at school please contact the office at: office@mtint.school.nz

SCHOOL DROP OFF

These are NOT drop off zones:

- Lodge Avenue Staff Carpark
- Lodge Avenue Turn Around
- The Bus Bay on Links Avenue

This is for the safety of your children, when dropping off or picking them up. Please refrain from entering and parking in these areas.

CHANGE OF DETAILS

It would greatly assist us if you could please advise the office if you have any changes of address, phone numbers, emergency contact details. In the event of an emergency, sickness or injury we need to be able to contact someone who can collect your child.

Please email the office at office@mtint.school.nz

KEY LINKS

- ✓ [ABSENTEES](#)
- ✓ [BELL TIMES](#)
- ✓ [BUS INFORMATION](#)
- ✓ [ONLINE PAYMENTS](#)
- ✓ [ORDERING LUNCHES](#)
- ✓ [PARENT PORTAL](#)
- ✓ [SCHOOL UNIFORM](#)



Checkout our website, newsletters, daily notices and Facebook links.

<https://mtint.school.nz/>

<https://www.facebook.com/Mtint.school.nz/>

<https://mtint.school.nz/newsletters/>



MOUNT MAUNGANUI
INTERMEDIATE

☎ 07 575 5512

✉ admin@mtint.school.nz

21 Lodge Ave, Mount Maunganui, 3116

mtint.school.nz